

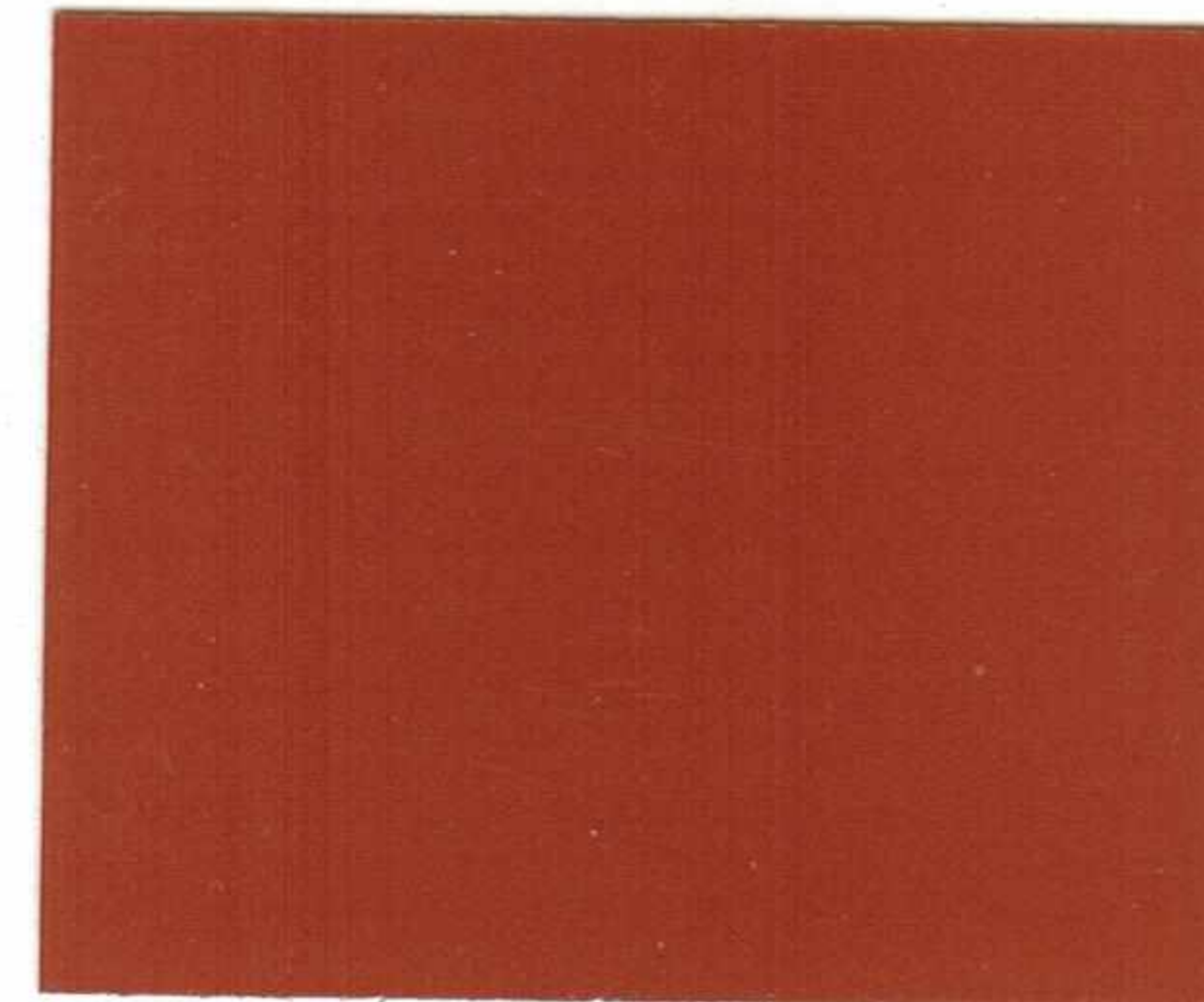
▲★ CARDINAL RED



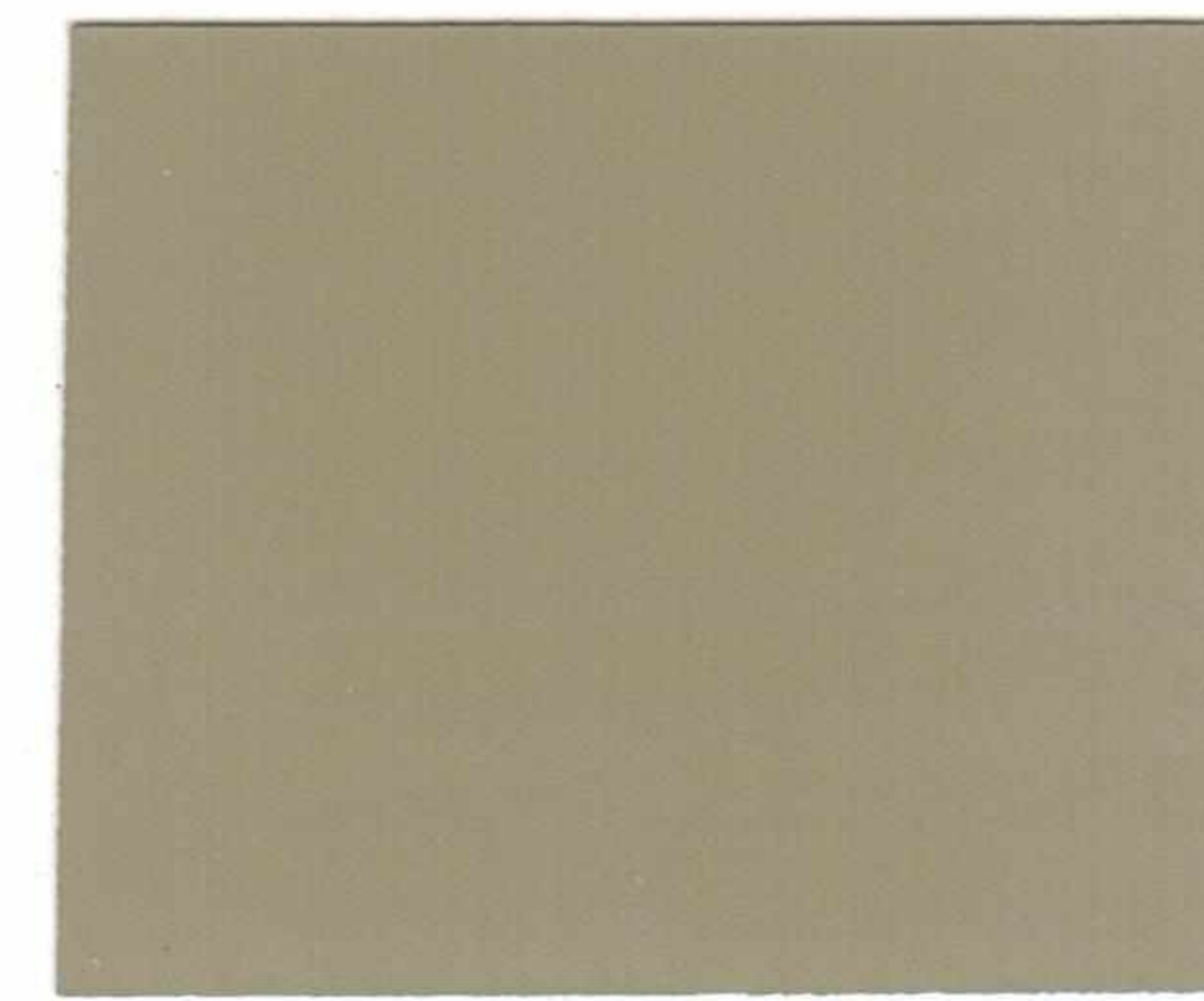
▲★ COLONIAL RED



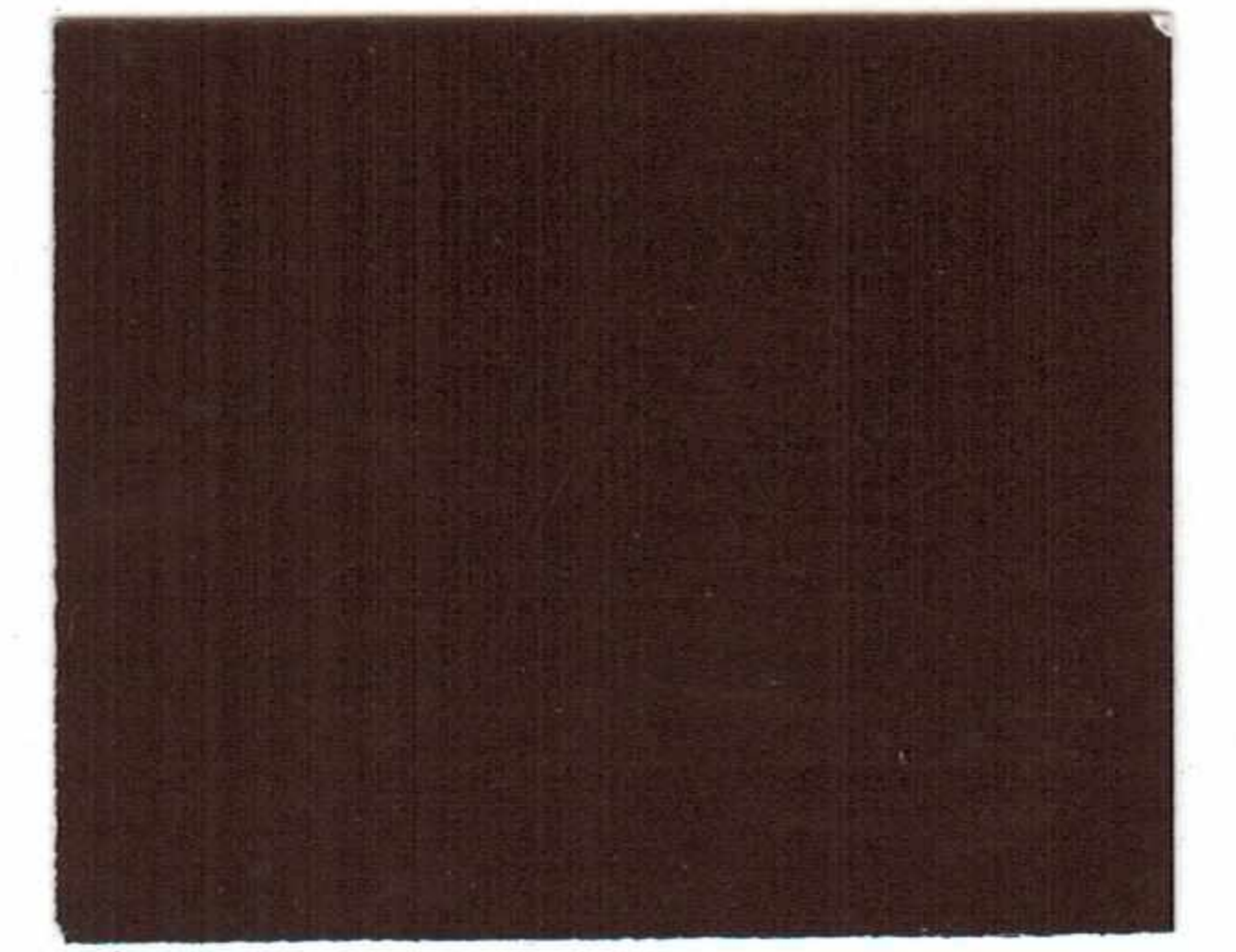
BURGUNDY



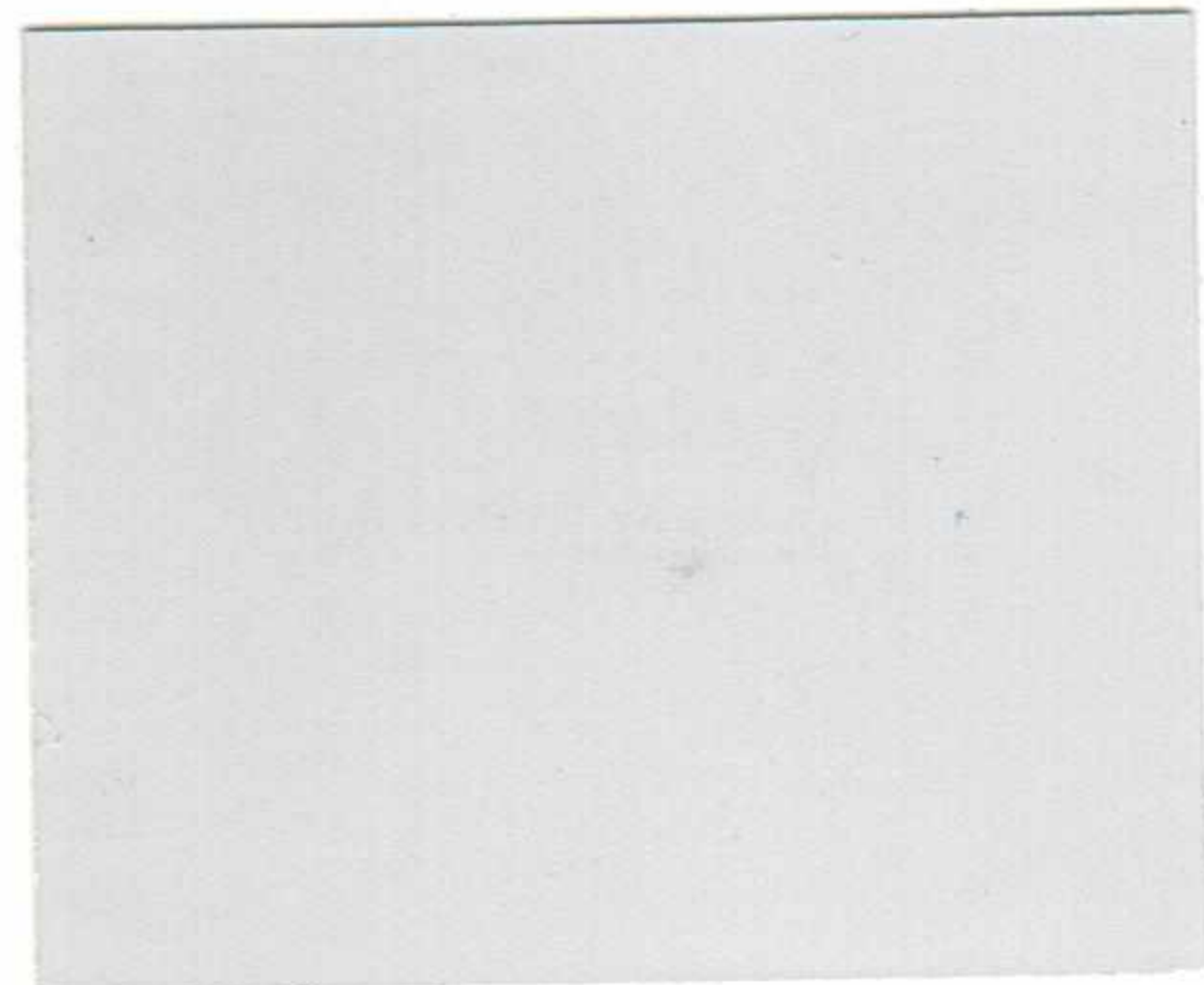
▲★ TERRA COTTA



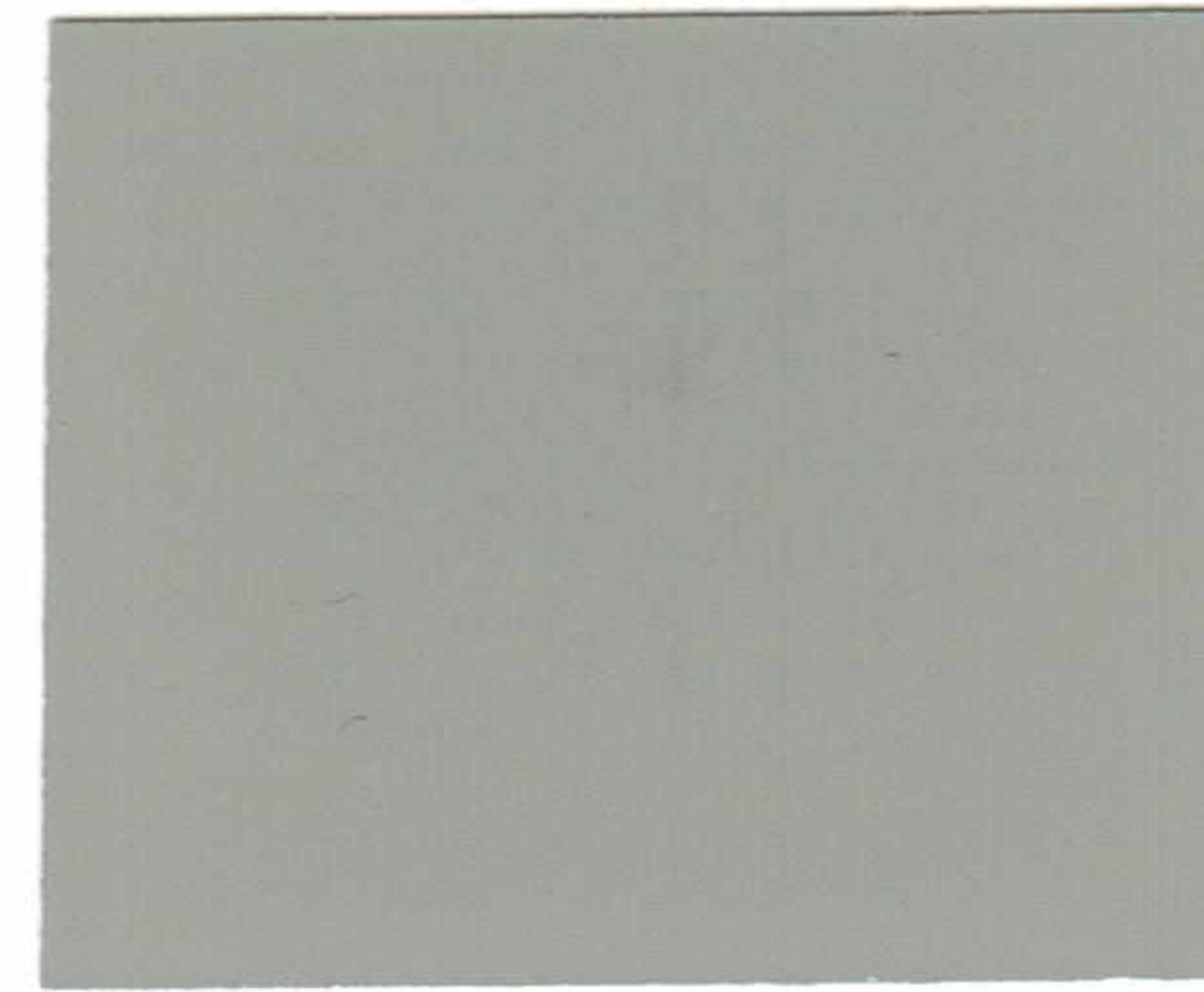
▲★ SIERRA TAN



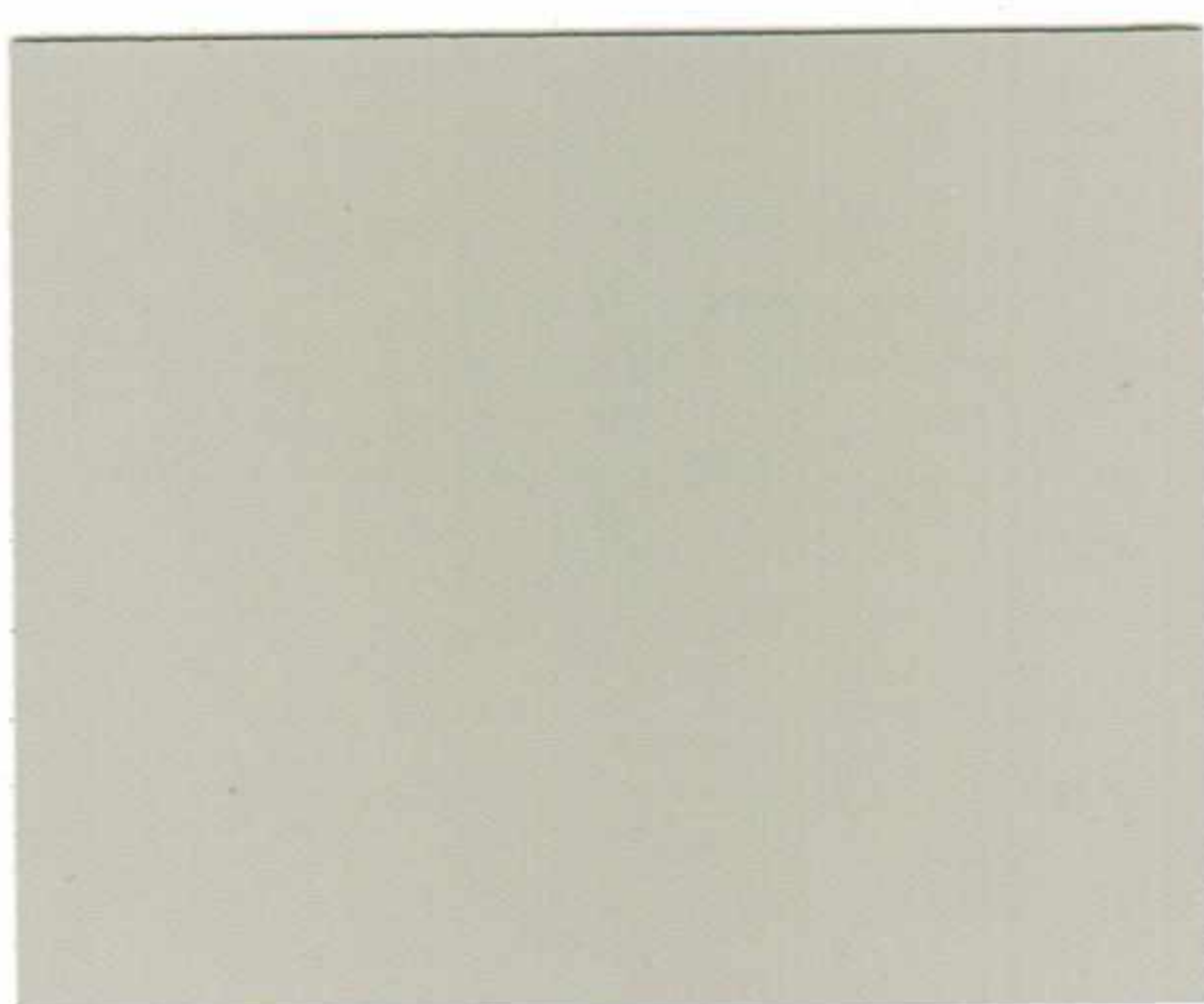
▲★ MANSARD BROWN



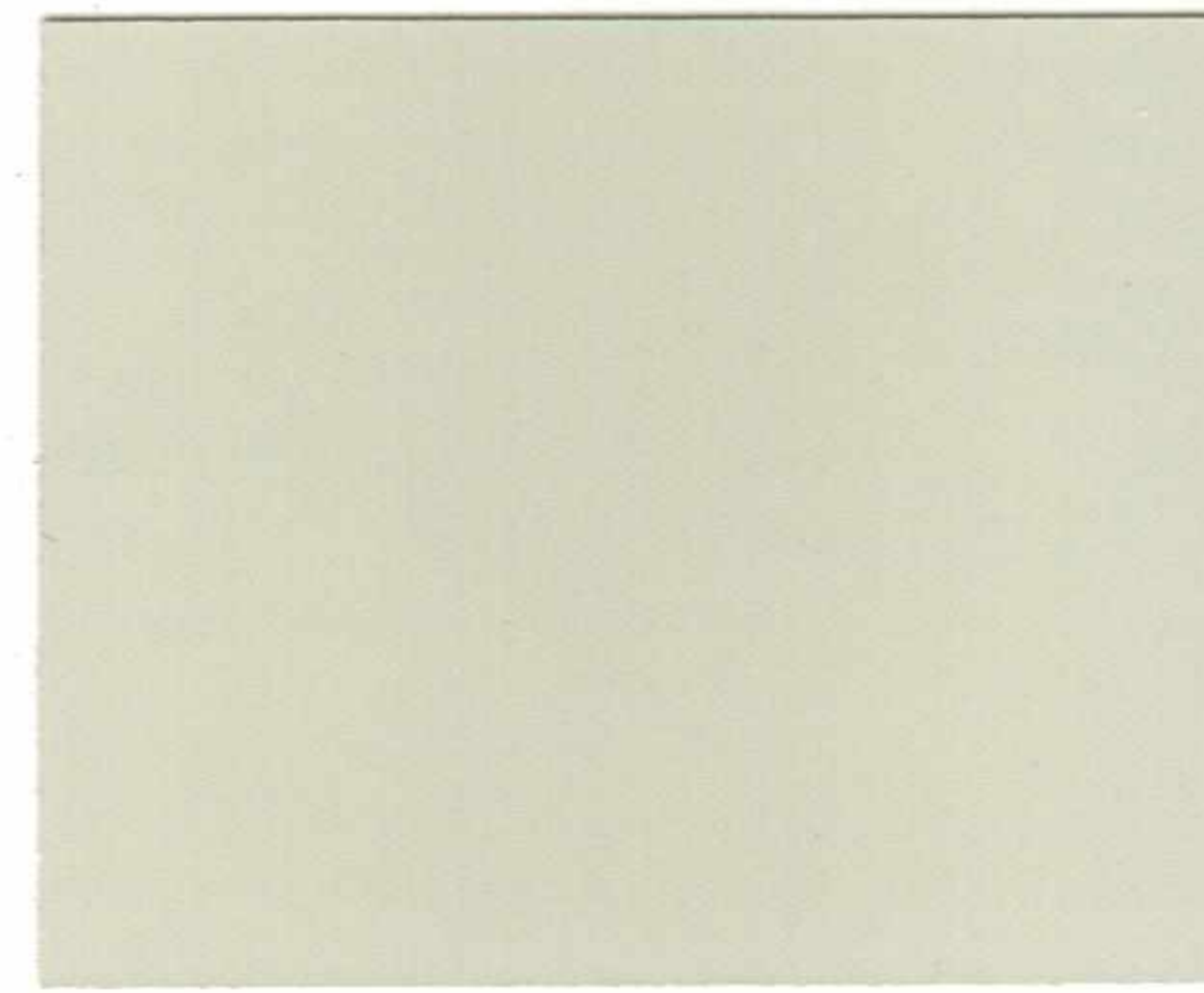
▲★ STONE WHITE



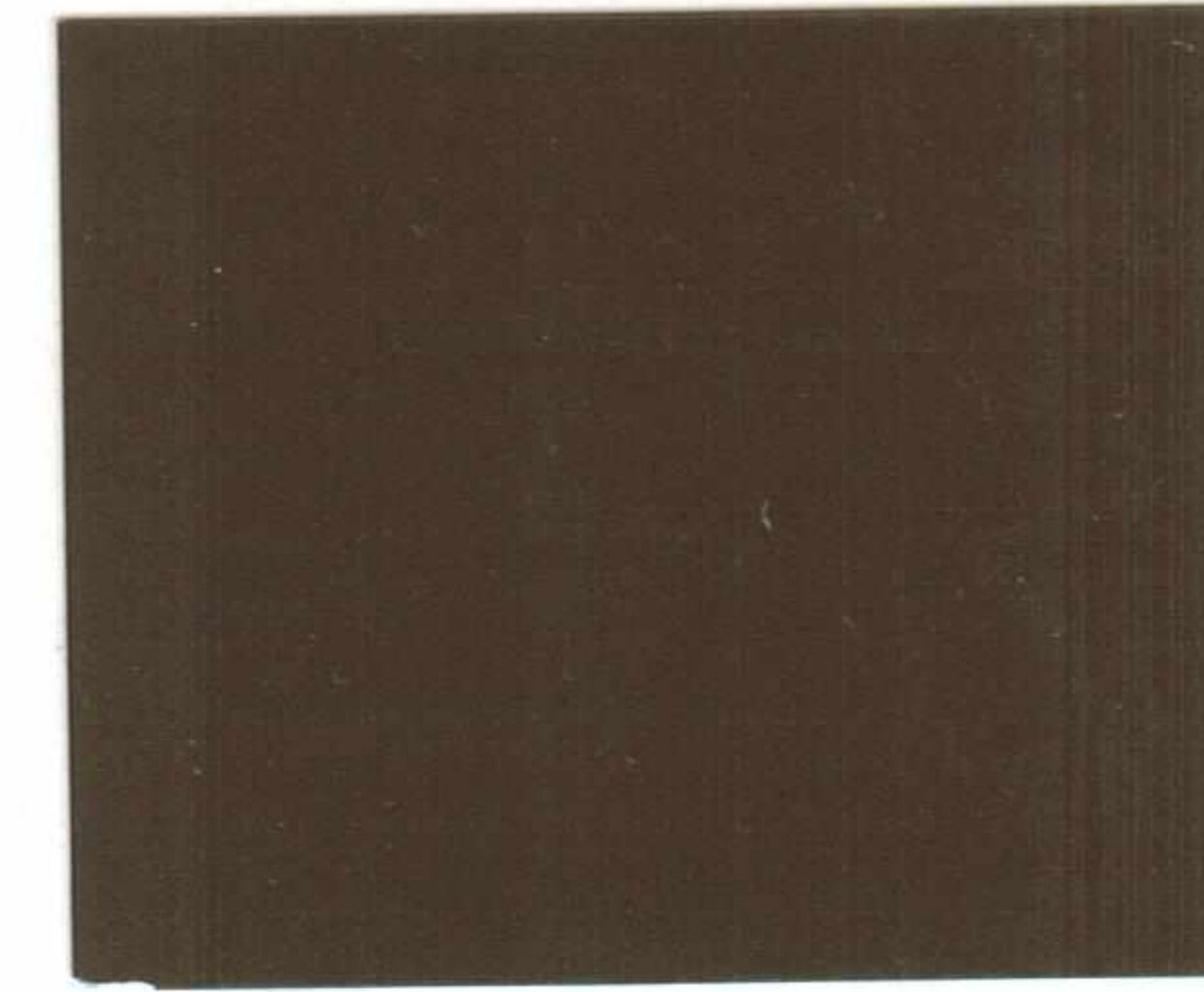
▲★ GRANITE



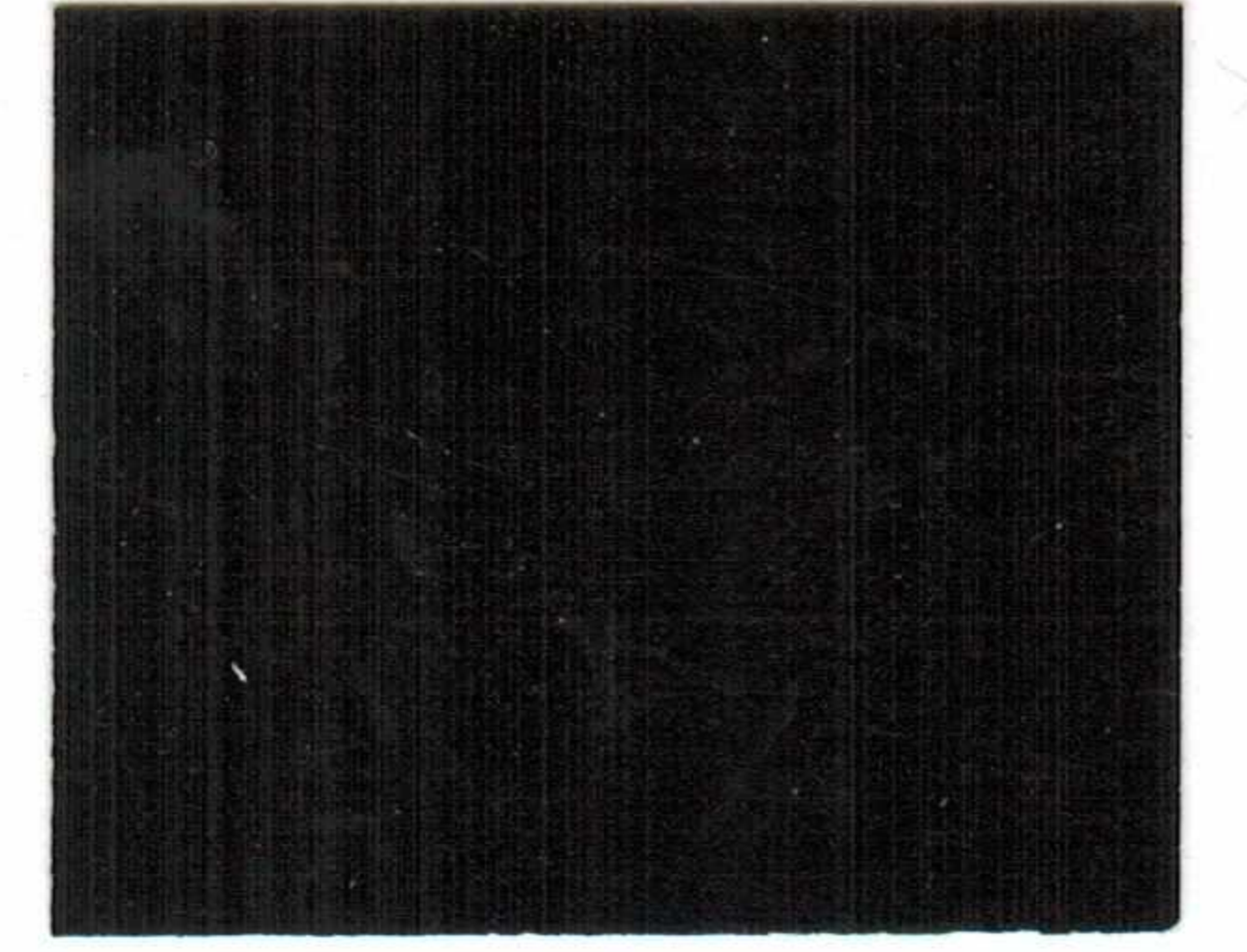
▲★ SANDSTONE



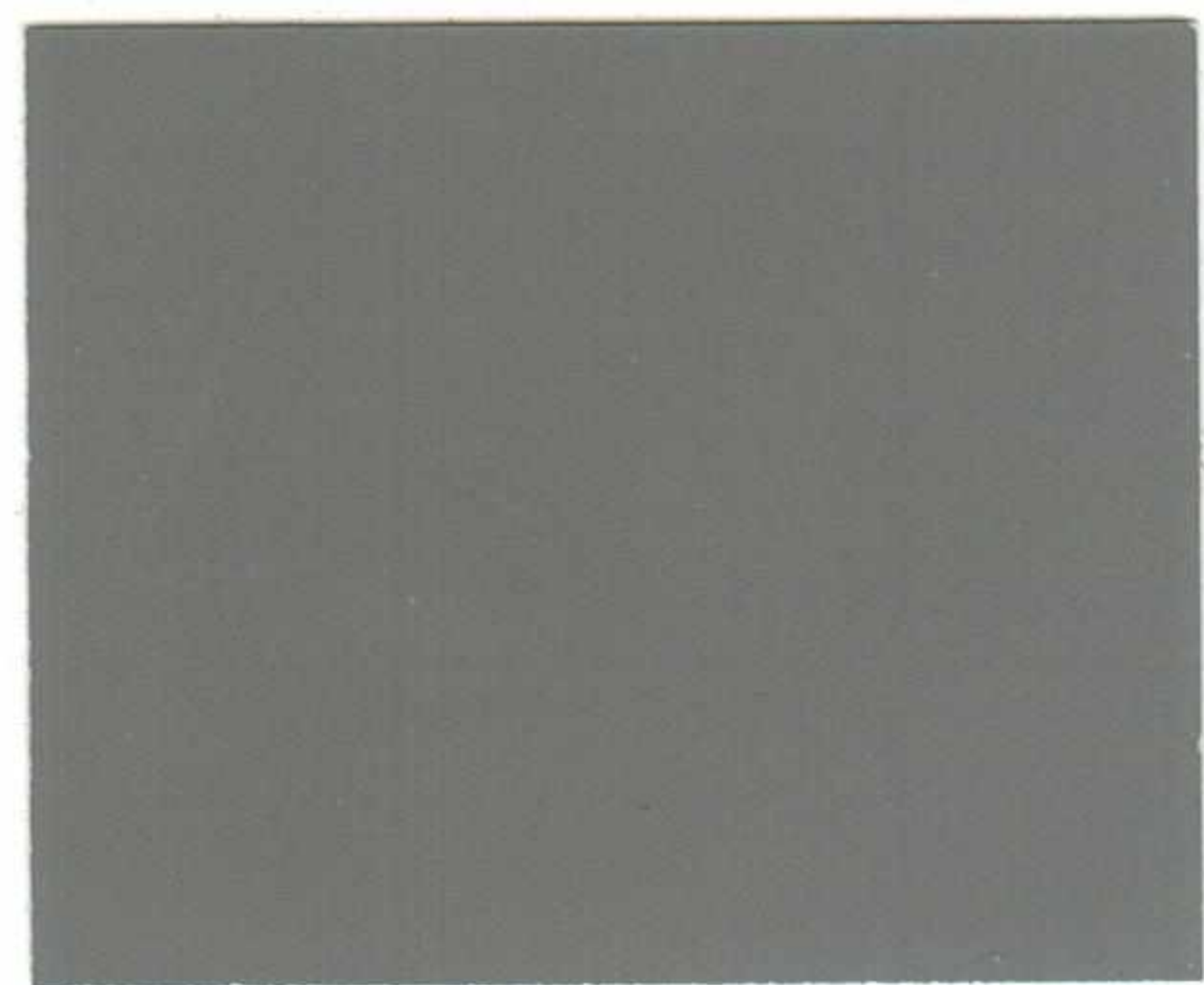
▲★ ALMOND



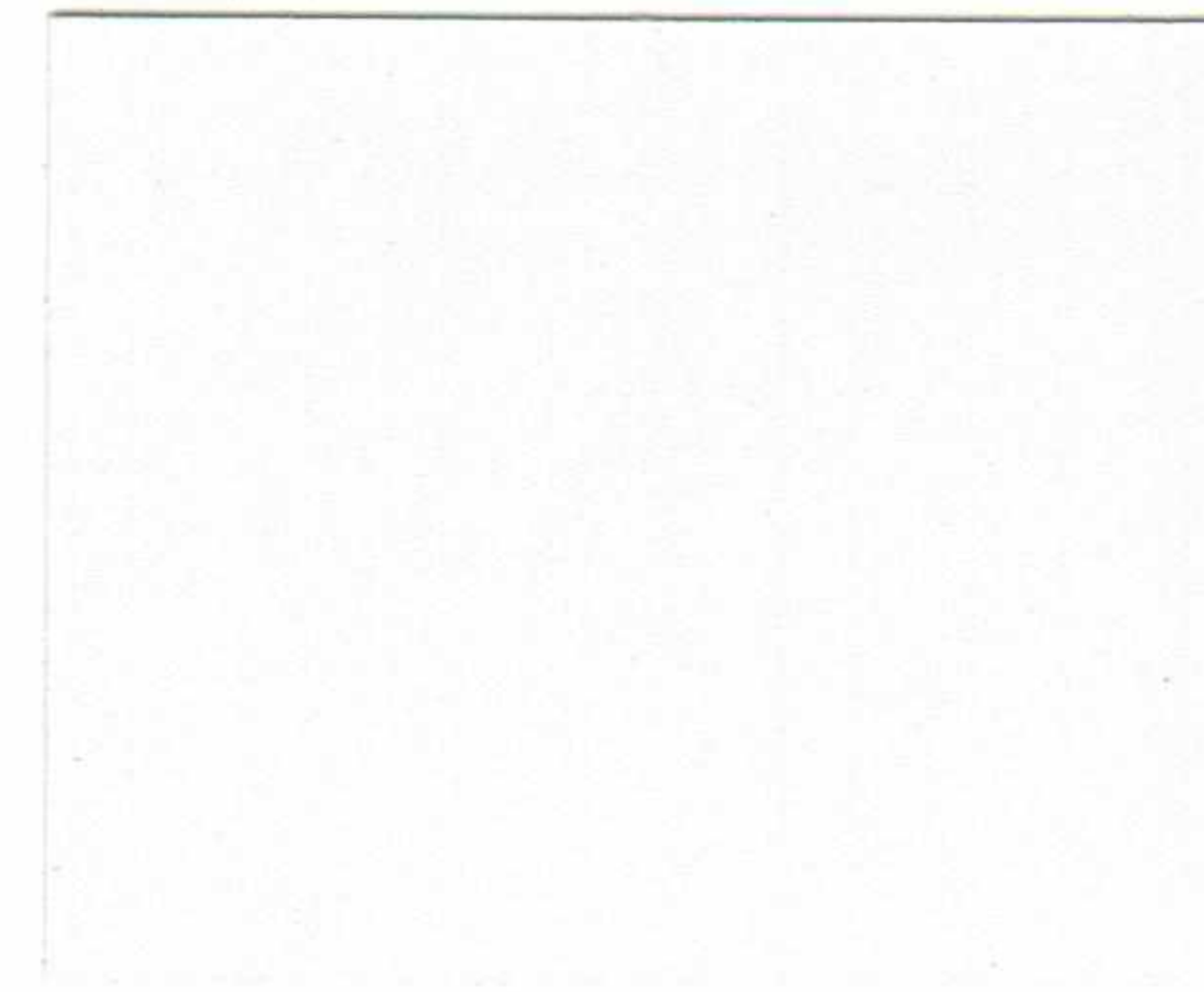
▲★ MEDIUM BRONZE



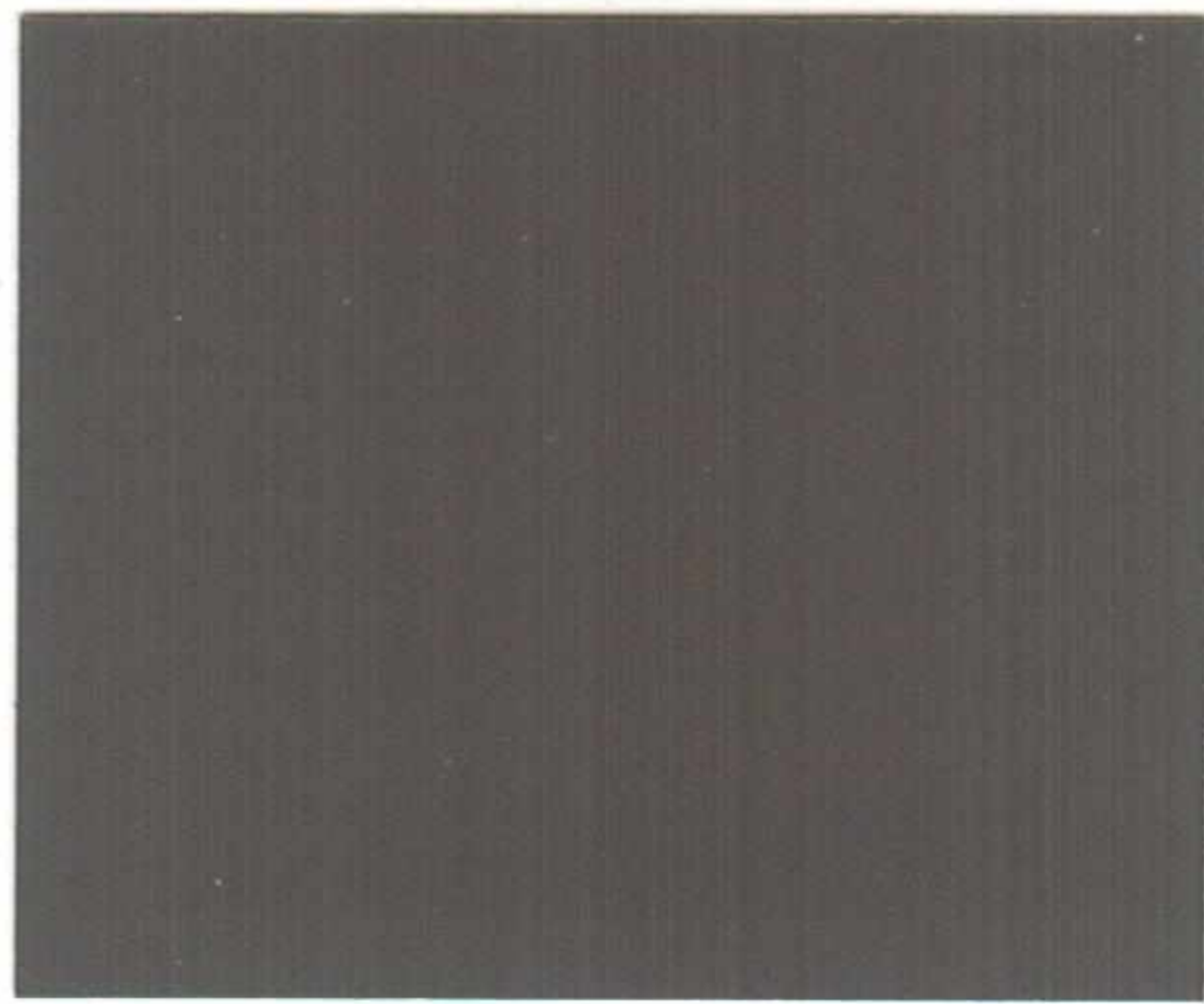
▲★ DARK BRONZE



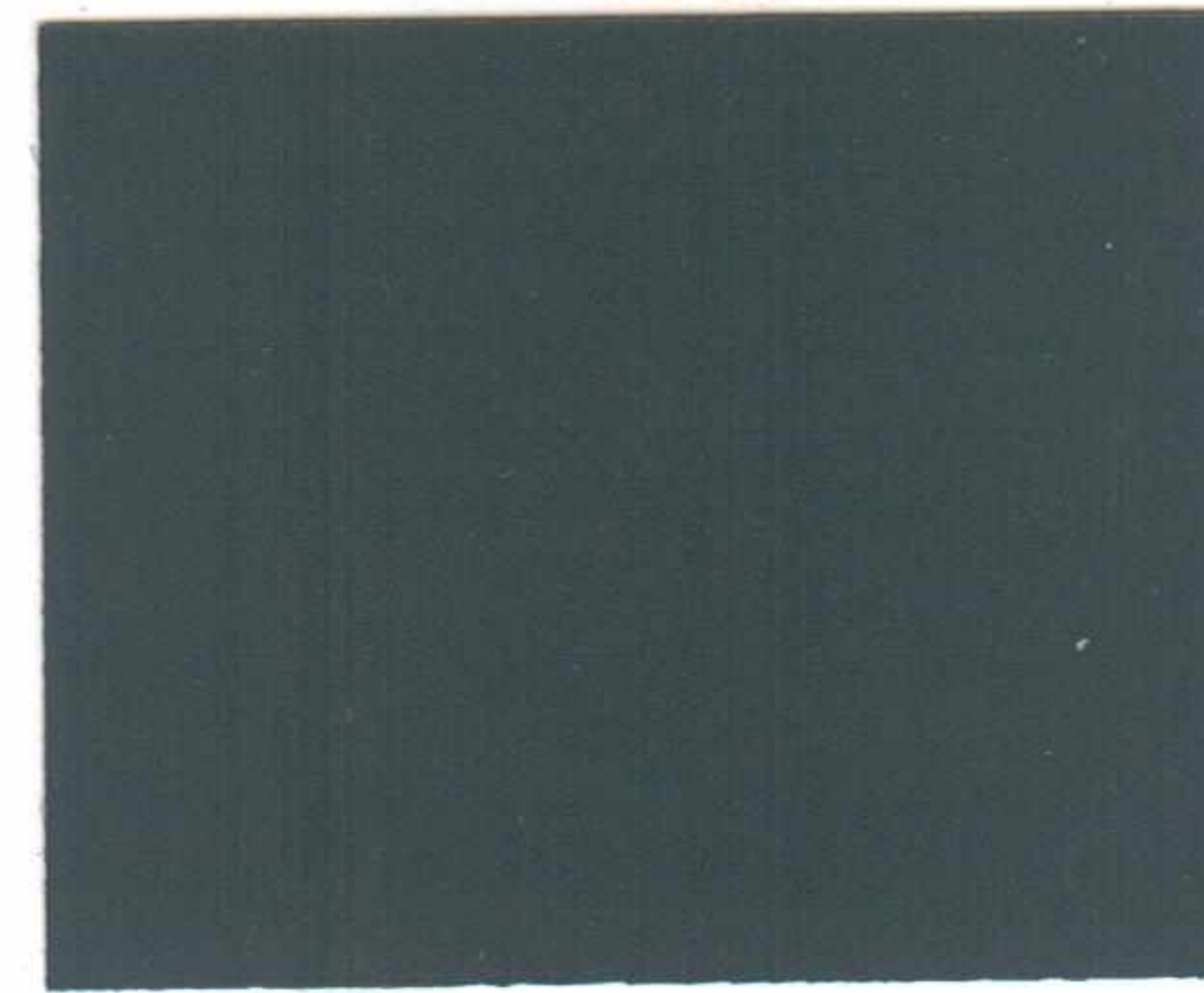
▲★ SLATE GRAY



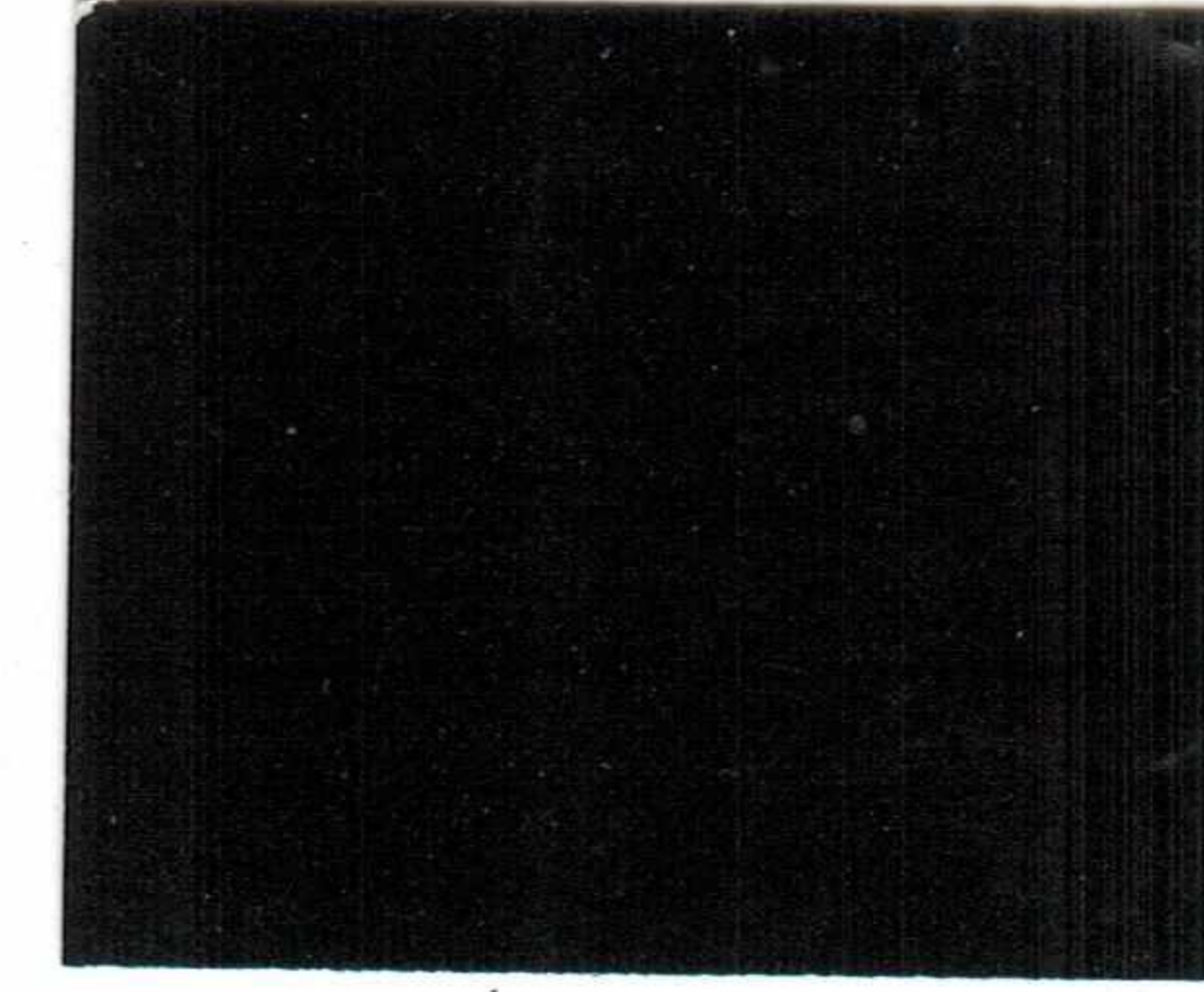
▲★ BONE WHITE



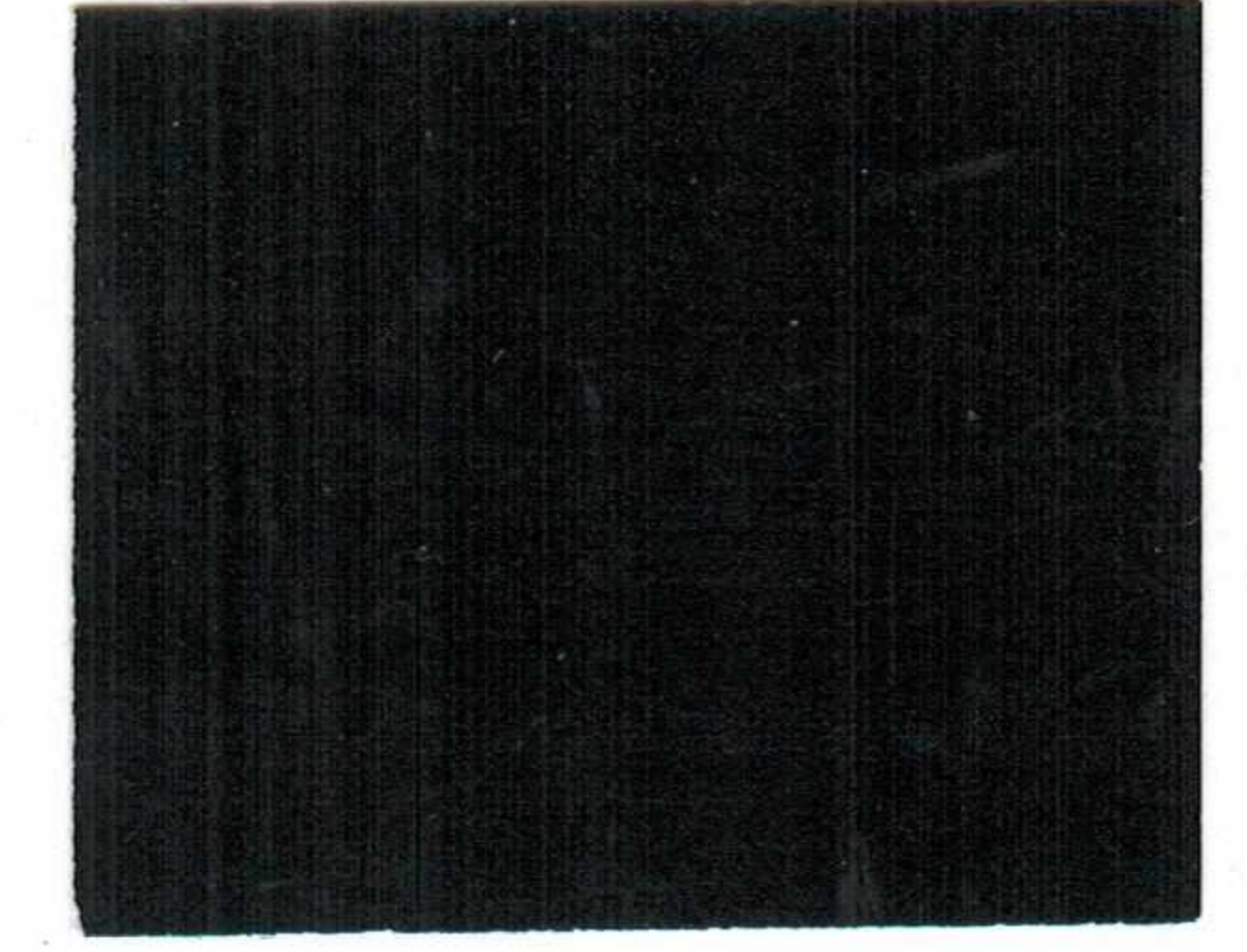
▲★ MUSKET GRAY



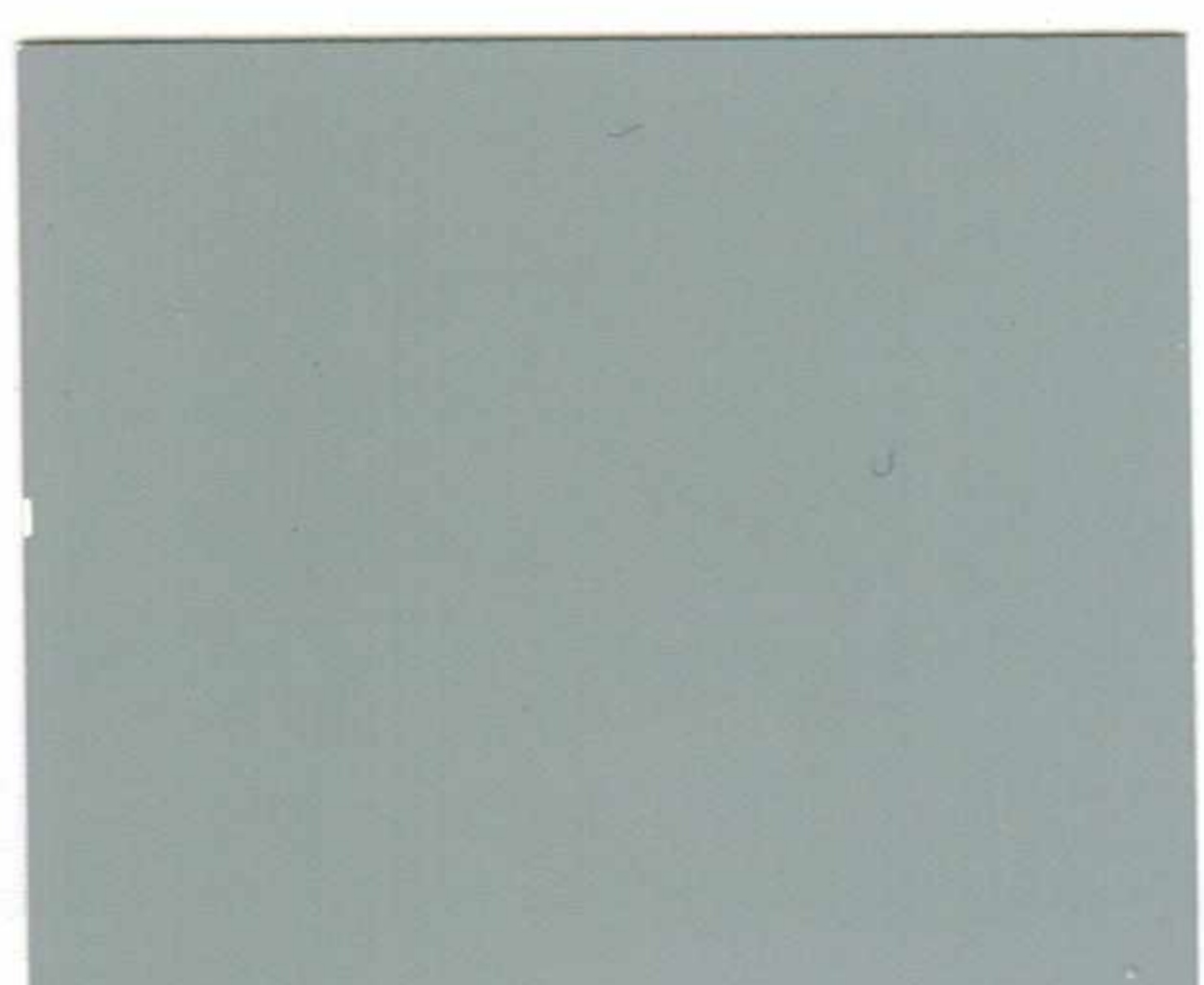
▲★ CHARCOAL



MIDNIGHT BRONZE



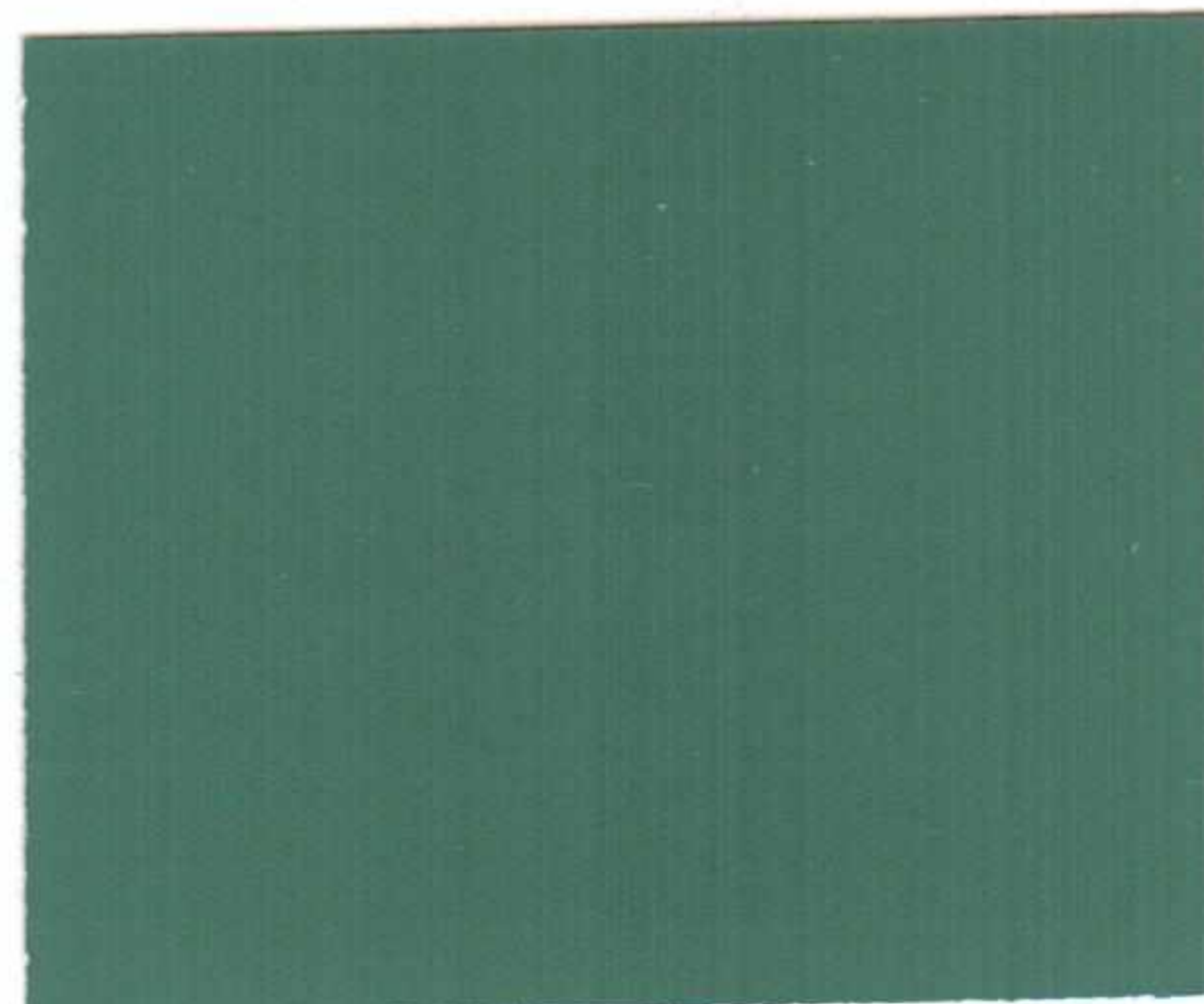
MATTE BLACK



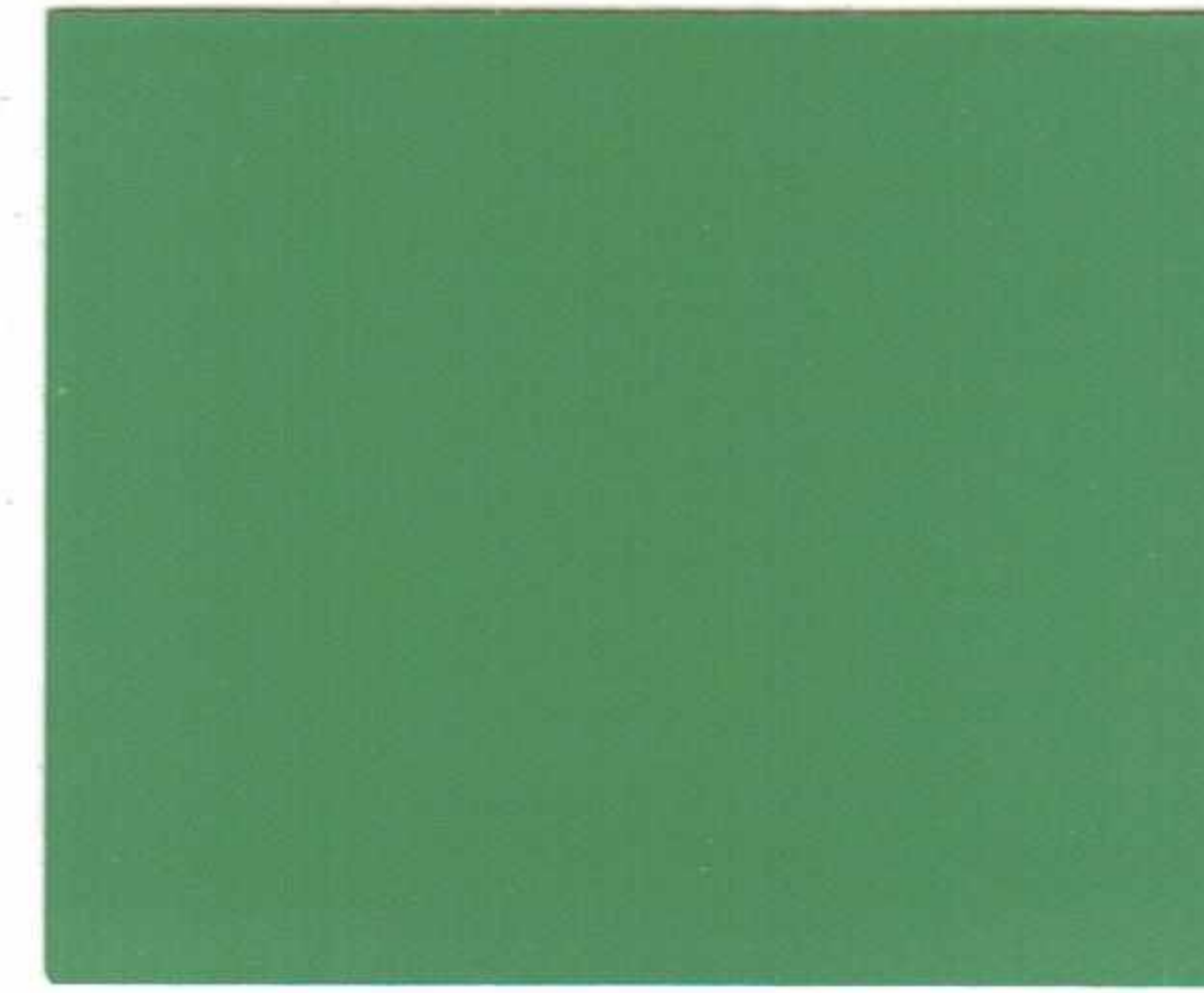
▲★ CITYSCAPE



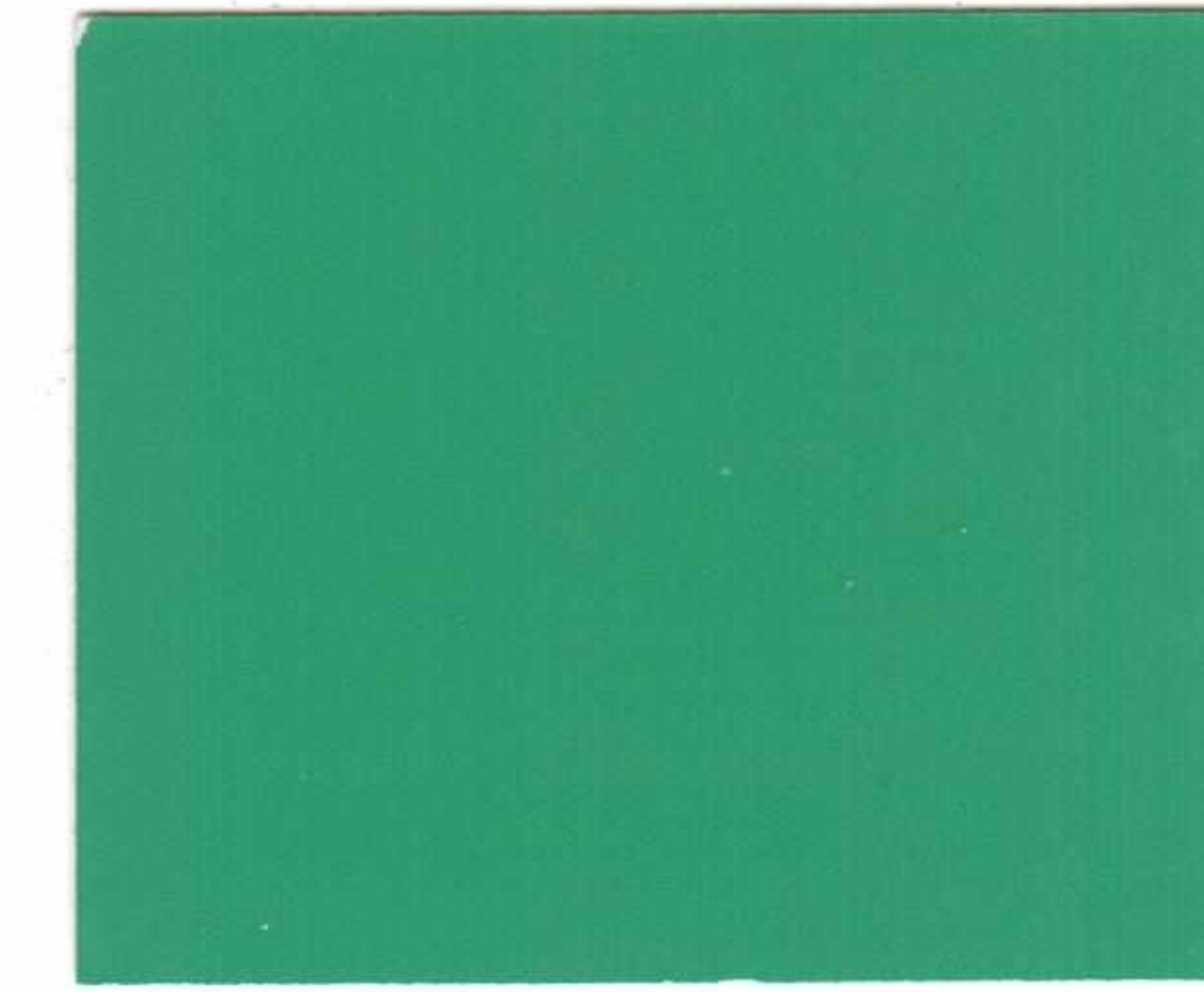
INTERSTATE BLUE



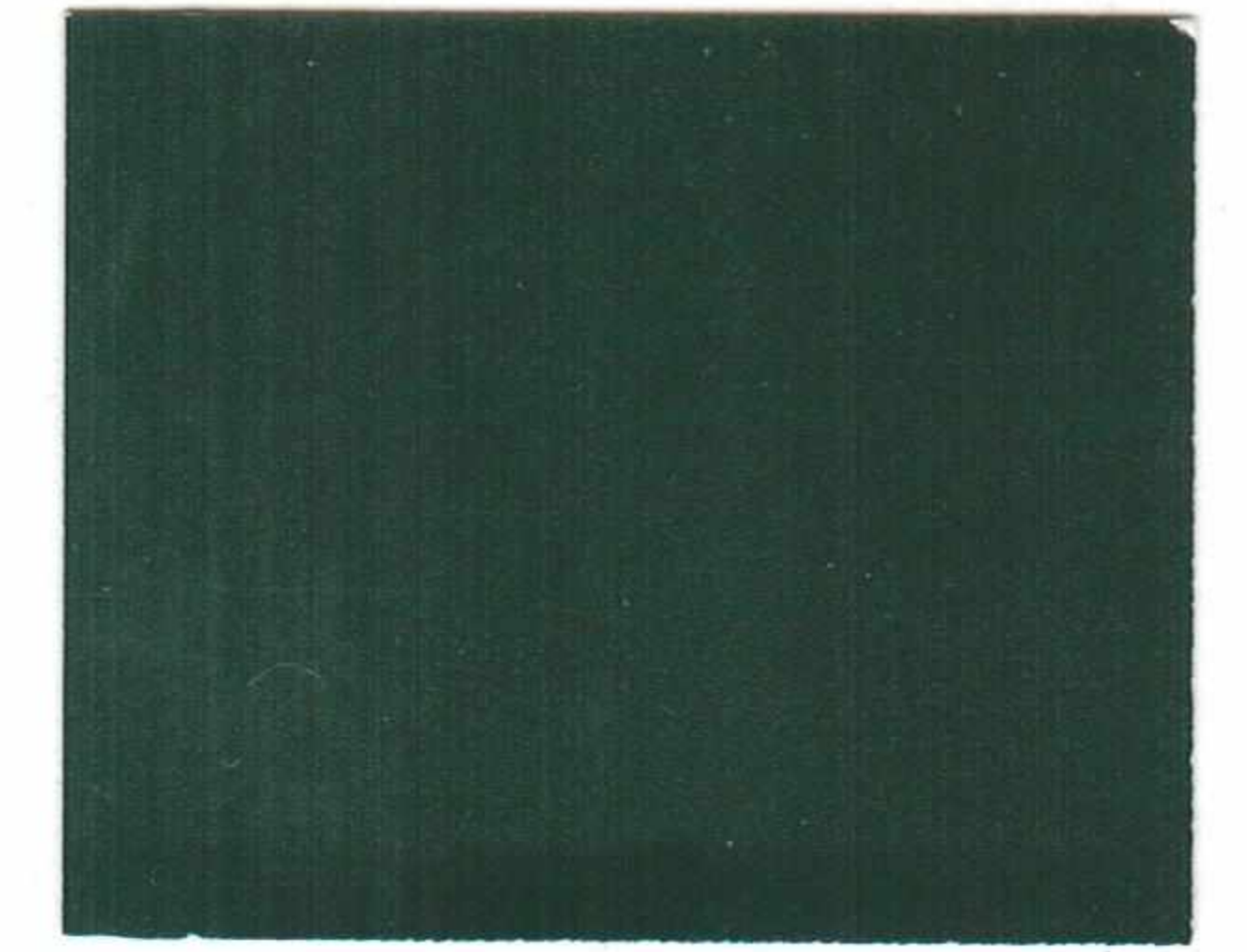
▲★ HEMLOCK GREEN



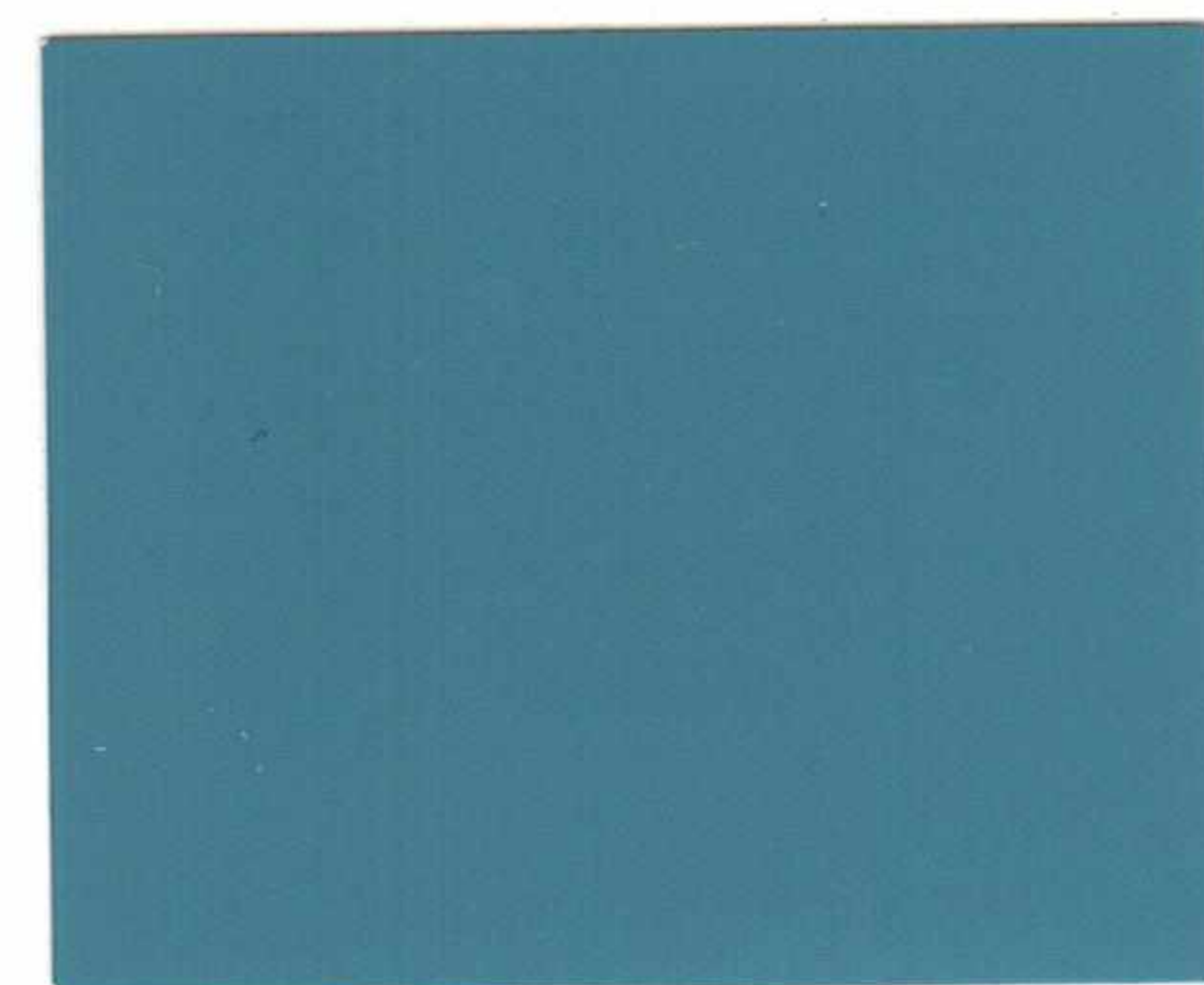
▲★ ARCADIA GREEN



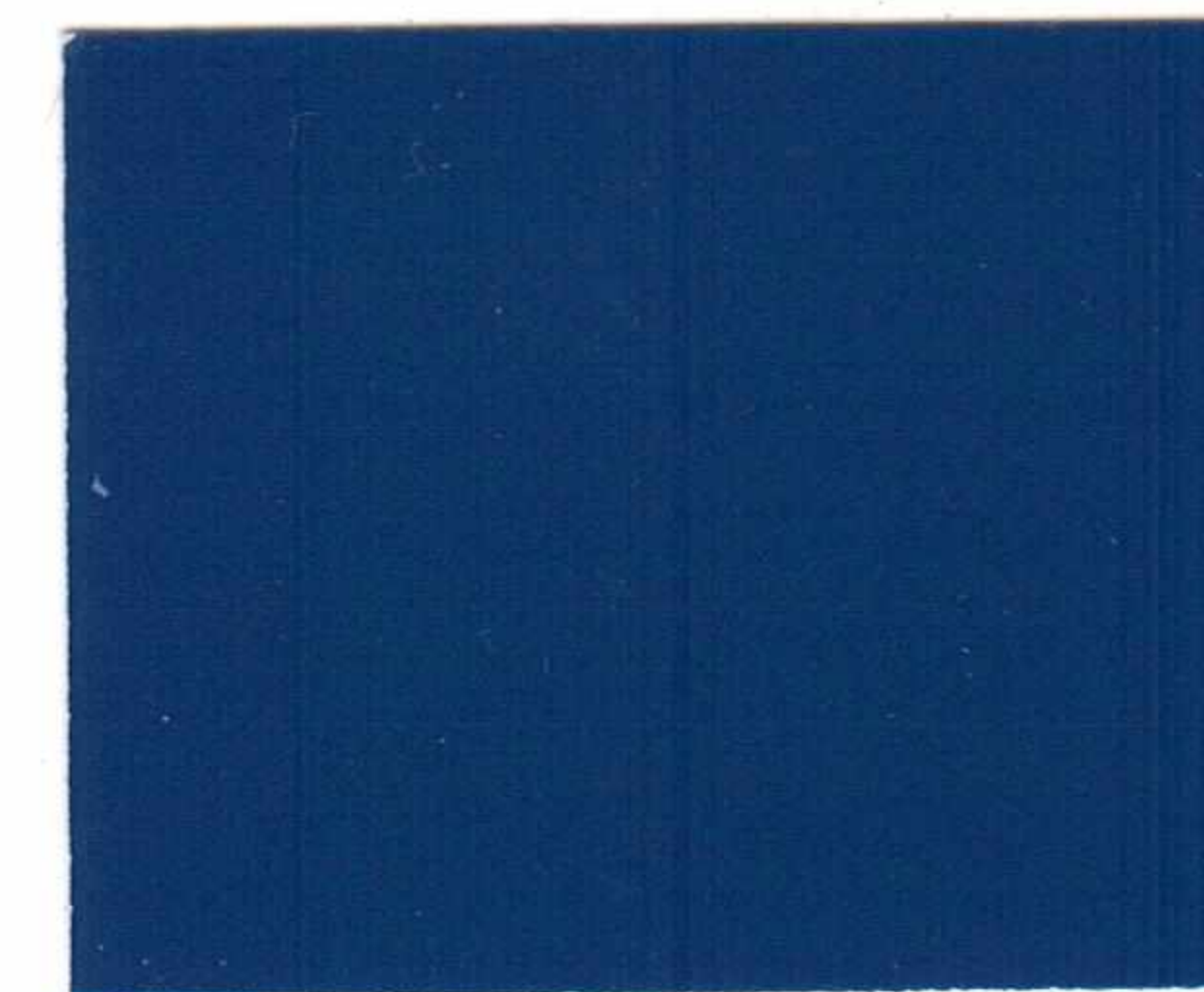
▲★ PATINA GREEN



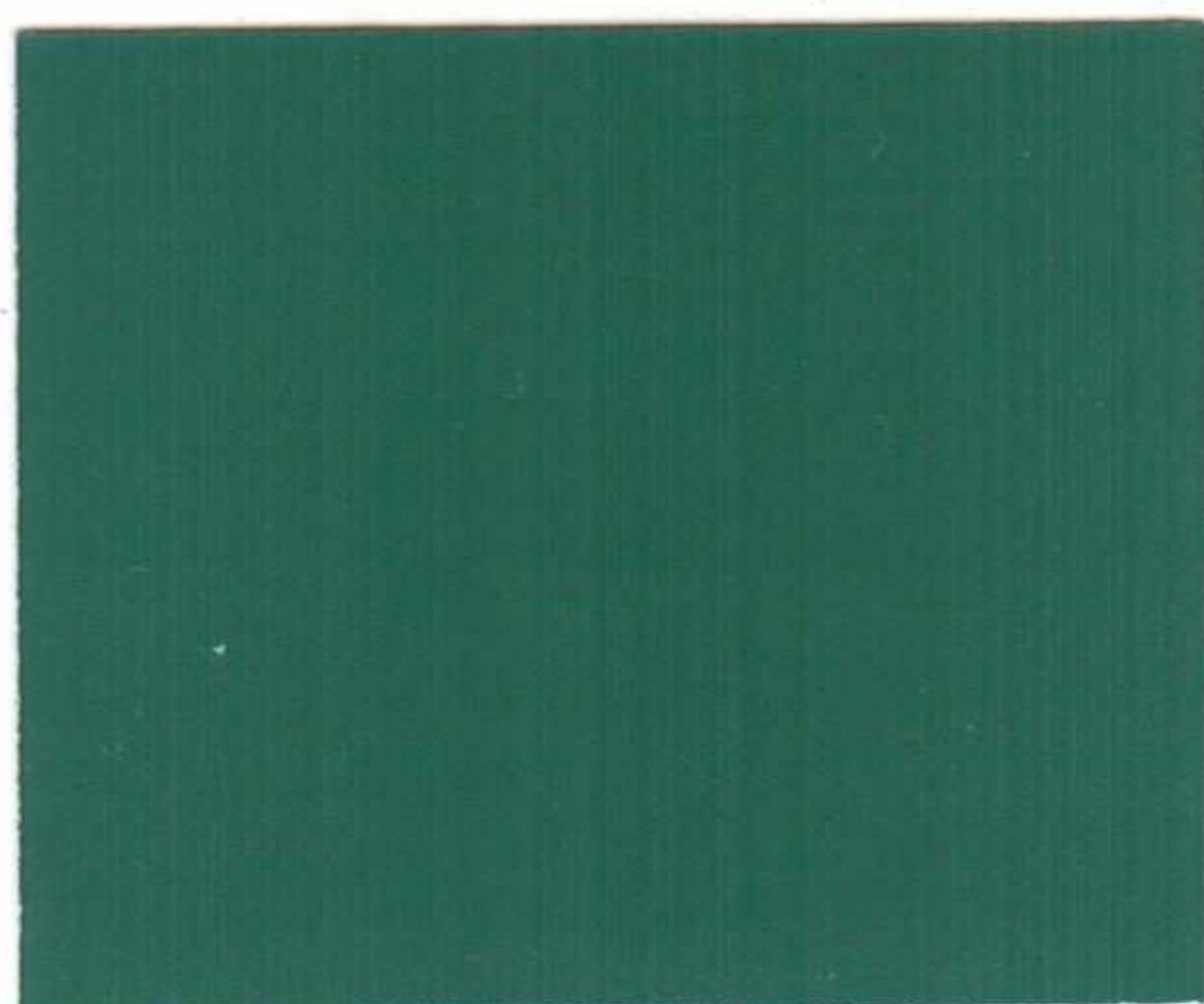
▲★ HUNTER GREEN



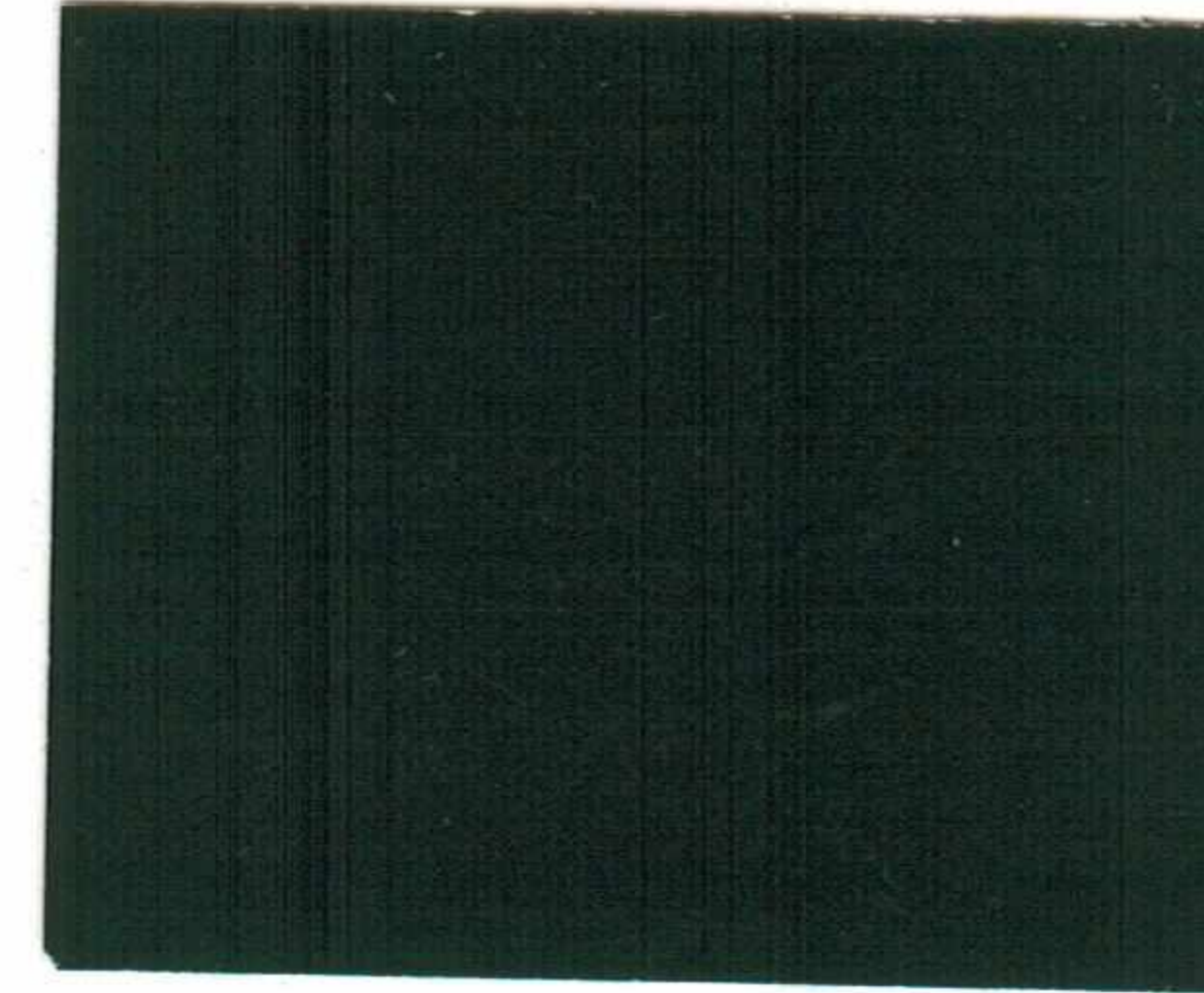
▲★ MILITARY BLUE



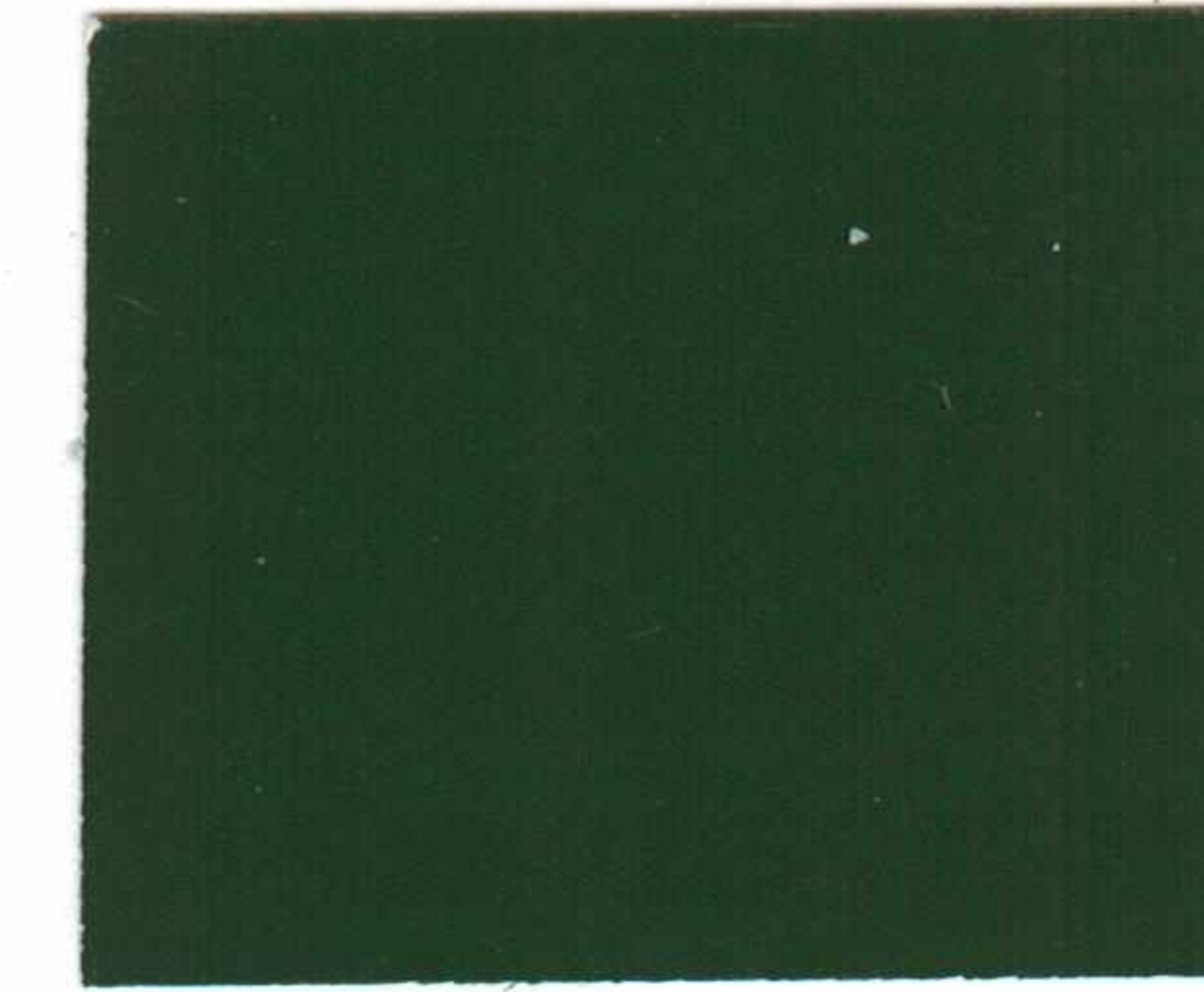
AWARD BLUE



▲★ TEAL



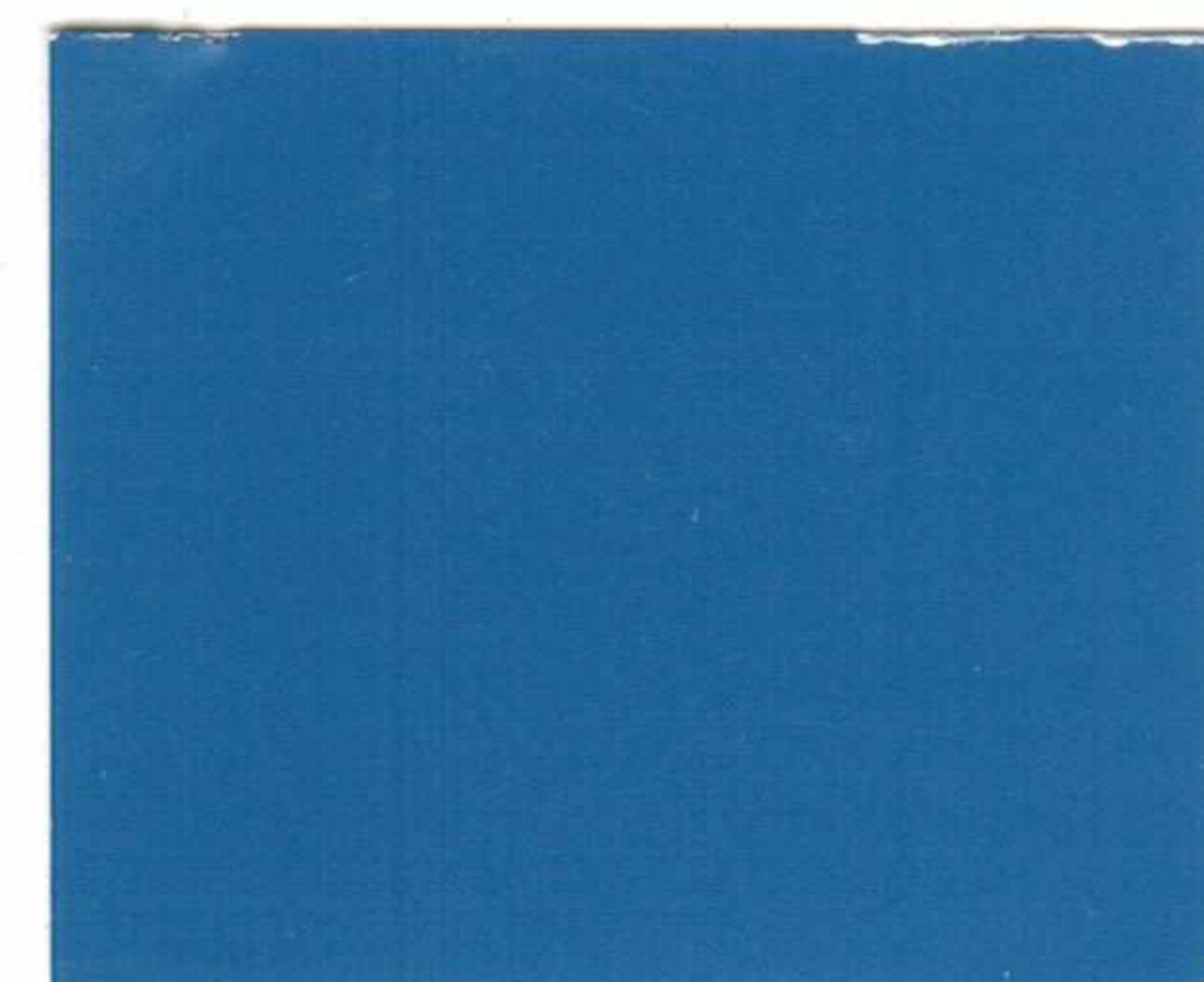
HARTFORD GREEN



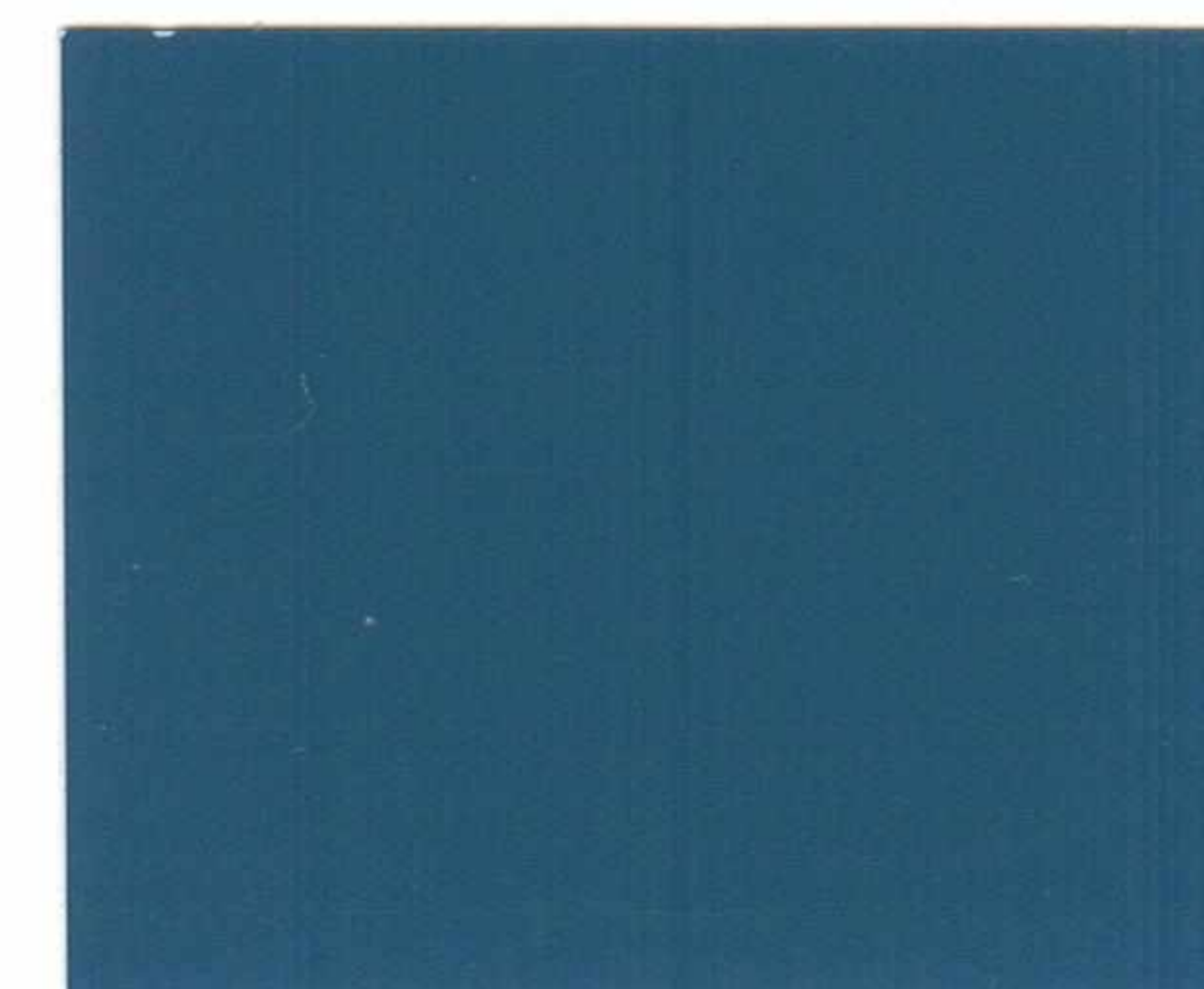
FOREST GREEN



▲★ EVERGREEN



★ BERKSHIRE BLUE



▲★ SLATE BLUE

Kynar 500® or Hylar 5000® pre-finished steel and aluminum



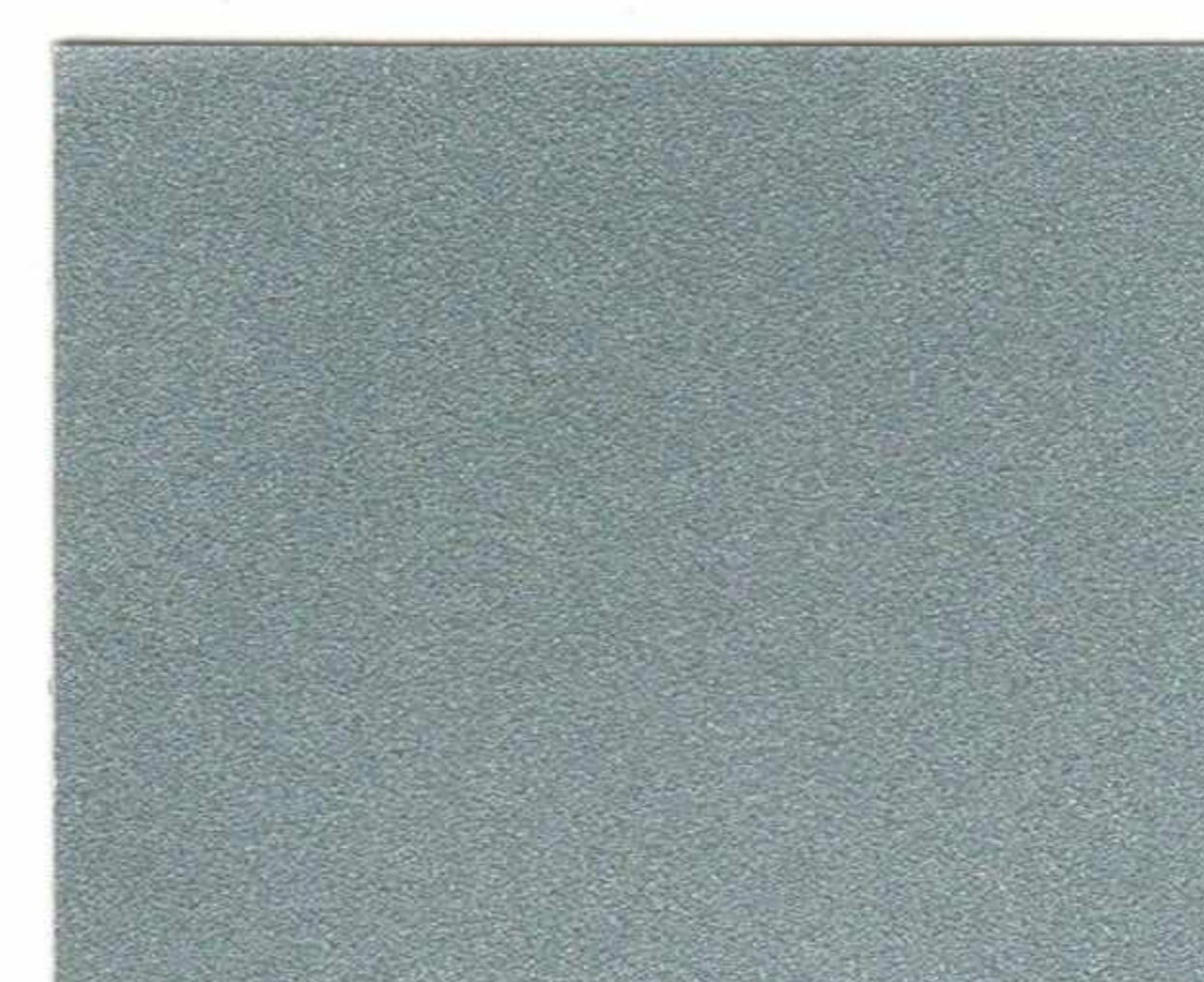
● Denotes Metallic Colors

▲ Denotes Cool Colors

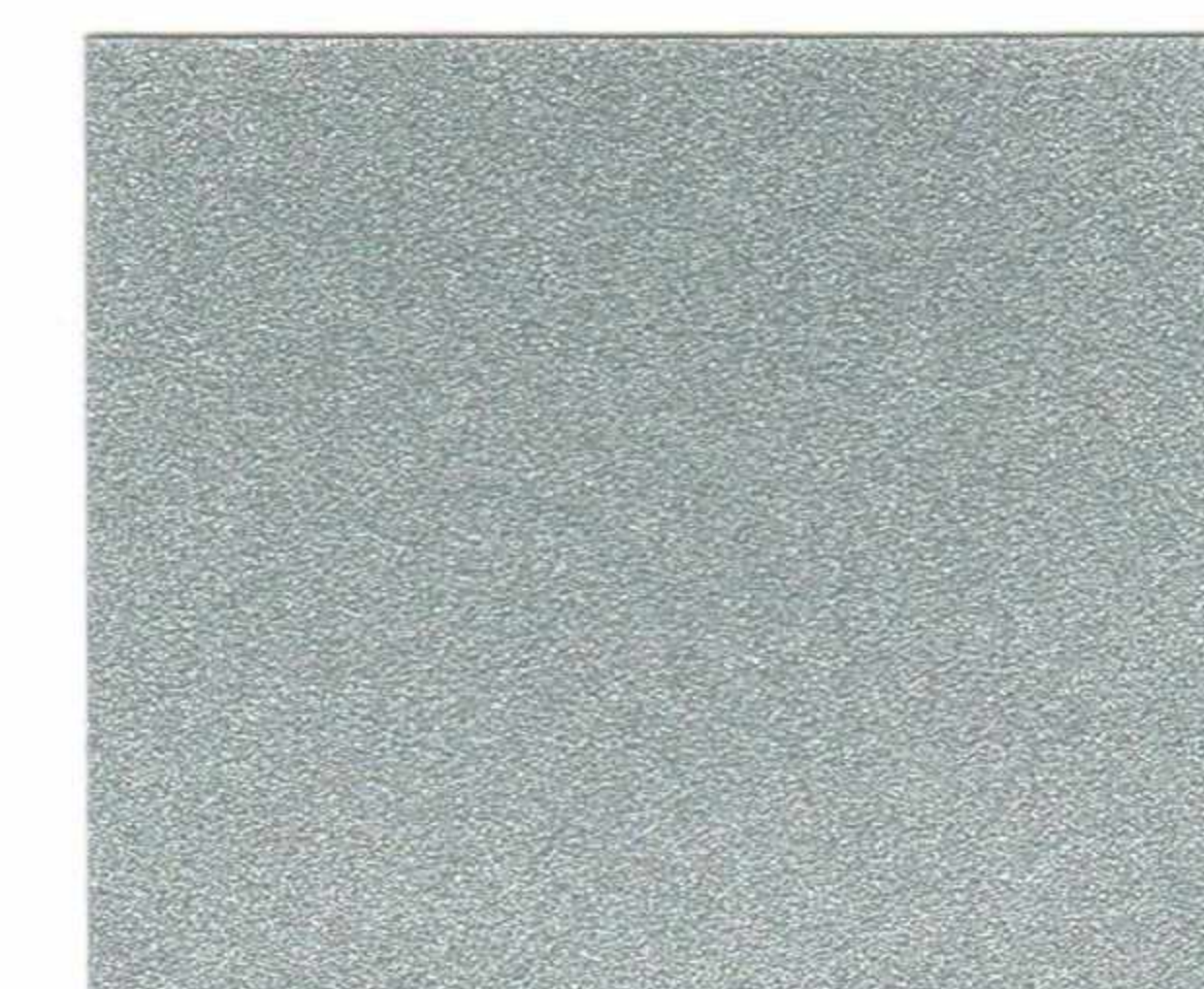
★ Denotes Energy Star Colors

See back for color availability chart. Note: Midnight Bronze available in .040 aluminum only.

Metallic Colors



●▲★ ZINC



●▲★ SILVER



●▲★ COPPER PENNY



●▲★ AGED COPPER



●▲★ CHAMPAGNE



●▲★ WEATHERED ZINC

900 Panel Color Availability

STANDARD COLORS	REFLECTIVITY	EMISSIVITY	3 YEAR EXPOSURE	SRI	STEEL			ALUMINUM			ENERGY STAR [®]
					24 GA.	22 GA.	.032	.040	.050	.063	
ALMOND	0.53	0.87	0.52	62	✓	✓	✓	✓	✓		★
ARCADIA GREEN	0.31	0.88	0.32	32	✓		✓				★
BONE WHITE	0.67	0.86	0.64	81	✓	✓	✓	✓	✓	✓	★
CARDINAL RED	0.37	0.86	0.36	39	✓		✓		✓		★
CHARCOAL	0.27	0.87	0.27	27	✓		✓		✓		★
CITYSCAPE	0.44	0.86	0.43	49	✓	✓	✓	✓	✓		★
COLONIAL RED	0.32	0.88	0.32	34	✓		✓	✓	✓		★
DARK BRONZE	0.26	0.85	0.24	24	✓	✓	✓	✓	✓	✓	★
EVERGREEN	0.27	0.86	0.25	26	✓		✓				★
GRANITE*	0.32	0.87	0.33	33	✓	✓	✓	✓	✓		★
HEMLOCK GREEN	0.29	0.86	0.30	29	✓		✓		✓		★
HUNTER GREEN	0.27	0.86	0.26	26	✓		✓				★
MANSARD BROWN	0.29	0.86	0.27	29	✓	✓	✓	✓	✓		★
MEDIUM BRONZE	0.26	0.88	0.25	26	✓	✓	✓	✓	✓	✓	★
MILITARY BLUE	0.29	0.87	0.28	29	✓		✓				★
MUSKET GRAY	0.31	0.87	0.30	32	✓	✓	✓		✓		★
PATINA GREEN	0.33	0.86	0.32	34	✓		✓				★
SANDSTONE	0.49	0.87	0.49	56	✓	✓	✓	✓	✓	✓	★
SIERRA TAN	0.36	0.87	0.36	39	✓	✓	✓	✓	✓		★
SLATE BLUE	0.25	0.87	0.24	24	✓		✓				★
SLATE GRAY	0.37	0.88	0.36	40	✓	✓	✓	✓	✓		★
STONE WHITE	0.64	0.87	0.61	77	✓	✓	✓	✓	✓	✓	★
TEAL	0.26	0.87	0.26	25	✓		✓				★
TERRA COTTA	0.36	0.88	0.35	39	✓		✓		✓		★
METALLIC COLORS											
AGED COPPER	0.26	0.87	0.25	25	✓		✓		✓		★
CHAMPAGNE	0.40	0.82	0.36	42	✓		✓	✓	✓		★
COPPER PENNY	0.47	0.87	0.44	53	✓		✓	✓	✓		★
SILVER	0.49	0.81	0.46	54	✓	✓	✓	✓	✓		★
WEATHERED ZINC	0.26	0.82	0.23	23	✓		✓		✓		★
ZINC	0.33	0.88	0.32	35	✓		✓	✓	✓		★
STANDARD COLORS (DO NOT MEET COOL ROOF REQUIREMENTS)											
AWARD BLUE					✓		✓		✓		
BERKSHIRE BLUE*	0.26	0.87	0.25	25	✓						★
BURGUNDY					✓		✓		✓		
FOREST GREEN					✓	✓	✓	✓	✓		
HARTFORD GREEN					✓		✓	✓	✓		
INTERSTATE BLUE					✓		✓		✓		
MATTE BLACK					✓		✓	✓	✓	✓	
MIDNIGHT BRONZE								✓			
CLEAR-COAT ACRYLIC FINISH (NON-KYNAR)											
GALVALUME PLUS	0.68	0.14	0.55	57	✓						

Metallic finishes are available from stock at a moderate extra cost.

Copper Penny is a Non-Weathering finish. Solar Reflectance Index calculated according to ASTM E-1980.

*Low Gloss/Low Sheen, full Kynar 500[®] or Hylar 5000[®] finish

Energy Star[®] Performance Criteria:

Emissivity uses ASTM C1371. Reflectivity uses ASTM C1549.

Technical Data for Kynar 500[®]/Hylar 5000[®] Coating:

- South Florida Exposure: Color (ASTM D 2244) - No more than 5ΔE Hunter units at 20 years; Chalk (ASTM D 4214) - Rating no less than 8 at 20 years; Film integrity - 20 years.
- Accelerated Weathering (ASTM D 4587, ASTM G 154): 5000 Hours, QUV-A, 340 NM Bulb - Chalk, per ASTM D 4214, rating of 6 or better; Color, per ASTM D 2244, < 5ΔE (Hunter Units) color change.
- Humidity Resistance (ASTM D 2247): Galvalume or HDG, 100% RH, 2000 hours - No field blisters; Aluminum, 100% RH, 3000 hours - No field blisters

- Salt Spray Resistance (ASTM B 117): Aluminum, 3000 hours, Galvalume or HDG, 1000 hours - Creep from scribe no more than 1/16", no field blisters
- Chemical/Acid Pollution Resistance (ASTM D 1308): Pass
- T-Bend (ASTM D 4145): 1T - 3T with no loss of adhesion
- Pencil hardness (ASTM D 3363): HB - 2B
- Specular Gloss (ASTM D 523) @ 60 degrees: Typical - 20 - 35
- Abrasion Resistance (ASTM D 968): 65 +/- 10 liters
- Cross Hatch Adhesion (ASTM D 3359): No loss of adhesion
- Reverse Impact (ASTM D 2794): Galvalume or HDG, 2x metal thickness inch-pounds, no loss of adhesion; Aluminum, 1.5x metal thickness inch-pounds, no loss of adhesion
- Flame Test (ASTM E 84): Class A Coating

- Water Immersion (ASTM D 870): 500 hours, 100 degrees, no loss of adhesion

Samples:

These color reproductions are as accurate as modern printing technology will permit. Free material samples are available on request.

Recycled Content:

For information on recycled content, contact your PAC representative or visit www.pacgreeninfo.com